



AAMC

Tomorrow's Doctors, Tomorrow's Cures®



2014 Physician Specialty Data Book

Center for Workforce Studies

November 2014



This is a publication of the Association of American Medical Colleges. The AAMC serves and leads the academic medicine community to improve the health of all. www.aamc.org

© 2014 Association of American Medical Colleges. May be reproduced and distributed with attribution for educational and noncommercial purposes only.

Acknowledgments

We would like to express our appreciation to our AAMC colleagues for their collaborative efforts. This publication was produced under the direction of Clese Erikson, Karen Jones, and Monica Whatley, with substantial assistance from Sarah Hampton in assembling and reviewing the manuscript.

We also owe special thanks to the American Medical Association for making the Physician Masterfile available to the AAMC for research purposes, the AAMC Student and Applicant Studies staff for providing data on physicians training in graduate medical education, the AAMC Data Warehouse staff without whom the data analysis would not be possible, and the AAMC Creative Services team.

The Center for Workforce Studies welcomes your comments and suggestions for future editions of this report. Suggestions by readers led to a methodological change this year for calculations of the people-per-physician ratios for the pediatric and geriatric specialties.

Please send comments, suggestions, or questions to:

Clese Erikson, Senior Director
AAMC Center for Workforce Studies
cerikson@aamc.org

Table of Contents

Acknowledgments.....	iii
Executive Summary.....	1
Key Definitions.....	2
Commonly Used Acronyms.....	3
Practice Specialty.....	4
Section 1: Active Physicians.....	7
Number of Active Physicians in the Largest Specialties by Major Professional Activity, 2013	
Figure 1.1.....	7
Table 1.1.....	8
Number of People per Active Physician by Specialty, 2013	
Figure 1.2.....	9
Table 1.2.....	10
Number and Percentage of Active Physicians by Sex and Specialty, 2013	
Figure 1.3.....	11
Table 1.3.....	12
Number and Percentage of Active Physicians by Age and Specialty, 2013	
Figure 1.4.....	13
Table 1.4.....	14
Number and Percentage of Active Physicians with a U.S. Doctor of Medicine (U.S. M.D.) Degree by Specialty, 2013	
Figure 1.5.....	15
Table 1.5.....	16
Number and Percentage of Active Physicians with a Doctor of Osteopathic Medicine (D.O.) Degree by Specialty, 2013	
Figure 1.6.....	17
Table 1.6.....	18
Number and Percentage of Active Physicians Who Are International Medical Graduates (IMGs) by Specialty, 2013	
Figure 1.7.....	19
Table 1.7.....	20

Number and Percentage of Active Physicians Practicing in the State Where They Completed Graduated Medical Education (GME) by Specialty, 2013

Figure 1.8..... 21
 Table 1.8 22

Percent Change in the Number of Active Physicians by Specialty, 2008-2013

Figure 1.9..... 23
 Table 1.9 24

Section 2: Residents/Fellows..... 25

Number of First-Year ACGME Residents/Fellows by Specialty, 2013

Figure 2.1..... 25
 Table 2.1 26

Number and Percentage of ACGME Residents/Fellows by Sex and Specialty, 2013

Figure 2.2..... 27
 Table 2.2 28

Number and Percentage of ACGME Residents/Fellows with a U.S. Doctor of Medicine (U.S. M.D.) Degree by Specialty, August 2007

Figure 2.3..... 29
 Table 2.3 30

Number and Percentage of ACGME Residents/Fellows with a Doctor of Osteopathic Medicine (D.O.) Degree by Specialty, 2013

Figure 2.4..... 31
 Table 2.4 32

Number and Percentage of ACGME Residents/Fellows Who Are International Medical Graduates (IMGs) by Specialty, 2013

Figure 2.5..... 33
 Table 2.5 24

Percent Change in Number of First-Year ACGME Residents/Fellows by Specialty, 2008-2013

Figure 2.6..... 35
 Table 2.6 36

Executive Summary

This publication, prepared by the Center for Workforce Studies at the Association of American Medical Colleges (AAMC), provides detailed statistics about active physicians and physicians in training in the specialties with the largest number of active physicians (i.e., specialties with more than 2,500 active physicians) in the United States. The 2014 Physician Specialty Data Book, updated from the 2012 edition, provides the most current data available about the physician workforce across specialties in a series of figures and tables.

The Data Book is divided into two sections:

Section 1: Active Physicians. This section provides data on active U.S. physicians who are in the 41 largest specialty groups. Data include the number of physicians by specialty; the number of people per active physician by specialty; age, gender, and type of medical degree by specialty; in-state graduate medical education (GME) retention by specialty; and percent change in the number of active physicians by specialty (2008–2013).

Section 2: Residents/Fellows. This section presents data on physicians in residency and fellowship programs for the 41 largest specialty groups. Data include the number of residents/fellows by specialty, gender and type of medical degree by specialty, and percent change in the number of residents/fellows by specialty (2008–2013).

Primary data sources:

- The American Medical Association (AMA) 2014 Physician Masterfile (data as of December 31, 2013)
- U.S. Census Bureau population estimates
- The 2013 AAMC/AMA National GME Census

Key Findings—Active Physicians

- In 2013, the specialties with the largest numbers of active physicians were the primary care specialties of internal medicine (111,047), family medicine/general practice (108,917), and pediatrics (56,262). (See Table 1.1.)
- In 2013, almost one-third (32.6 percent) of the active physician workforce in the United States was female. Percentages of females in the top specialties ranged from a high of 60.4 percent in pediatrics to a low of 4.6 percent in orthopedic surgery. (See Table 1.3.)
- In 2013, 42.6 percent of active physicians in the United States were age 55 or older. Percentages in individual specialties ranged from 78.9 percent in pulmonary disease to 5.4 percent in internal medicine/pediatrics. (See Table 1.4.)
- The specialties with the highest percentage of active physicians practicing in the same state where they trained were child and adolescent psychiatry (57.8 percent), psychiatry (56.3 percent), and family medicine/general practice (56.0 percent). The specialties with the lowest percentage practicing in the same state where they trained were thoracic surgery (31.2 percent), neurological surgery (33.6 percent), and plastic surgery (33.6 percent). (See Table 1.8.)
- The five-year period from 2008 to 2013 saw remarkable growth in some specialties, particularly interventional cardiology, which grew 84.7 percent from 1,468 to 2,711. Other specialties decreased in number, including anatomic/clinical pathology (-10.4 percent) and pulmonary disease (-8.8 percent). (See Table 1.9.)

Key Findings—Residents/Fellows

- In 2013, the specialties with the largest number of first-year Accreditation Council for Graduate Medical Education (ACGME) residents and fellows were the primary care specialties of internal medicine (8,539), family medicine/general practice (3,312), and pediatrics (2,789). (See Table 2.1.)
- In 2013, 46.1 percent of the residents and fellows in ACGME-accredited programs were female. Percentages of females in the largest specialties ranged from a high of 82.6 percent in obstetrics and gynecology residencies to a low of 9.5 percent in interventional cardiology and vascular and interventional radiology residencies. (See Table 2.2.)
- In 2013, the largest proportion of residents and fellows in ACGME-accredited programs were U.S. M.D.'s (65.6 percent), while international medical graduates (IMGs) comprised 25.9 percent and D.O.'s made up 8.3 percent. (See Tables 2.3, 2.4, and 2.5.)
- Between 2008 and 2013, vascular and interventional radiology (35.2 percent), pain medicine and pain management (28.7 percent), and critical care medicine (22.9 percent) saw the most growth in the number of first-year ACGME residents and fellows. Preventive medicine (-28.6 percent), physical medicine and rehabilitation (-12.6 percent), and anatomic/clinical pathology (-9.5 percent) saw the biggest decreases. (See Table 2.6.)

Key Definitions

Active physicians: Physicians (federal and nonfederal) who are licensed by a state are considered active, provided they are working at least 20 hours per week. Physicians who are retired, semi-retired, temporarily not in practice, not active for other reasons, or have not completed their graduate medical education are excluded. Active physicians include those working in direct patient care, administration, medical teaching, research, or other non-patient care activities. Active physicians include those with a Doctor of Medicine (M.D.) and a Doctor of Osteopathic Medicine (D.O.). The total number of active physicians may differ between tables in this report as a result of missing information in the data file. For example, to determine the percentage of active physicians who are female, the total number of active physicians excludes people whose gender was not reported in the data file.

U.S. M.D.: Physicians who received their M.D. degree from a U.S. medical school that is accredited by the Liaison Committee on Medical Education (LCME).

D.O.: Physicians who received their D.O. degree from a U.S. osteopathic school that is accredited by the American Osteopathic Association Commission on Osteopathic College Accreditation (COCA).

First-year residents/fellows: Physicians who are in their first year of a graduate medical education program in their specialty are considered first-year residents or fellows. In some cases, the resident or fellow may have had prior GME training in a different specialty.

International medical graduate: An individual who graduated from a medical school outside of the United States, Puerto Rico, or Canada is considered an international medical graduate. This includes U.S. citizens who completed their medical education outside the United States, Puerto Rico, or Canada. To be eligible for licensure and practice in the United States, all IMGs must be certified by the Educational Commission for Foreign Medical Graduates (ECFMG) and complete a residency training program in the United States. Graduates of Canadian medical schools are not considered IMGs because they do not have to be certified by the ECFMG to enter a residency training program in the United States. Please note

that although graduates of Canadian medical schools who are practicing in the United States are not considered IMGs or U.S. M.D.'s, they are included in the total for active physicians.

Commonly Used Acronyms

AAMC	Association of American Medical Colleges
ACGME	Accreditation Council for Graduate Medical Education
AMA	American Medical Association
D.O.	Doctor of Osteopathic Medicine
GME	Graduate medical education
IMG	International medical graduate
M.D.	Doctor of Medicine

Practice Specialty

This report presents data on the specialties with the largest number of active physicians in 2013, which is defined as having more than 2,500 active physicians. Specialty designations for active physicians rely on the primary specialty selected by the physician on the AMA-administered Census of Physicians. Specialty designations for residents and fellows reflect the ACGME training program in which the physician is training.

The AMA Physician Masterfile lists more than 200 specialty categories and there are more than 140 ACGME specialties and subspecialties. To give a more comprehensive and informative view of the specialty category, we grouped some related specialties together. Because of differences in the specialty designations between the AMA Physician Masterfile and the ACGME, specialty groupings used in this report will sometimes vary for active physicians and trainees as indicated in the table below.

Three major changes to the specialty groupings for this year's report should be noted when comparing to previous editions. Critical Care Medicine and Pulmonary Disease have been divided into two separate specialty groupings. Pain Medicine and Pain Management specialties were combined for the first time and collectively exceed 2,500 physicians. In addition, three new specialties grew to exceed 2,500 physicians for the first time since previous reports: Interventional Cardiology, Neuroradiology, and Vascular & Interventional Radiology.

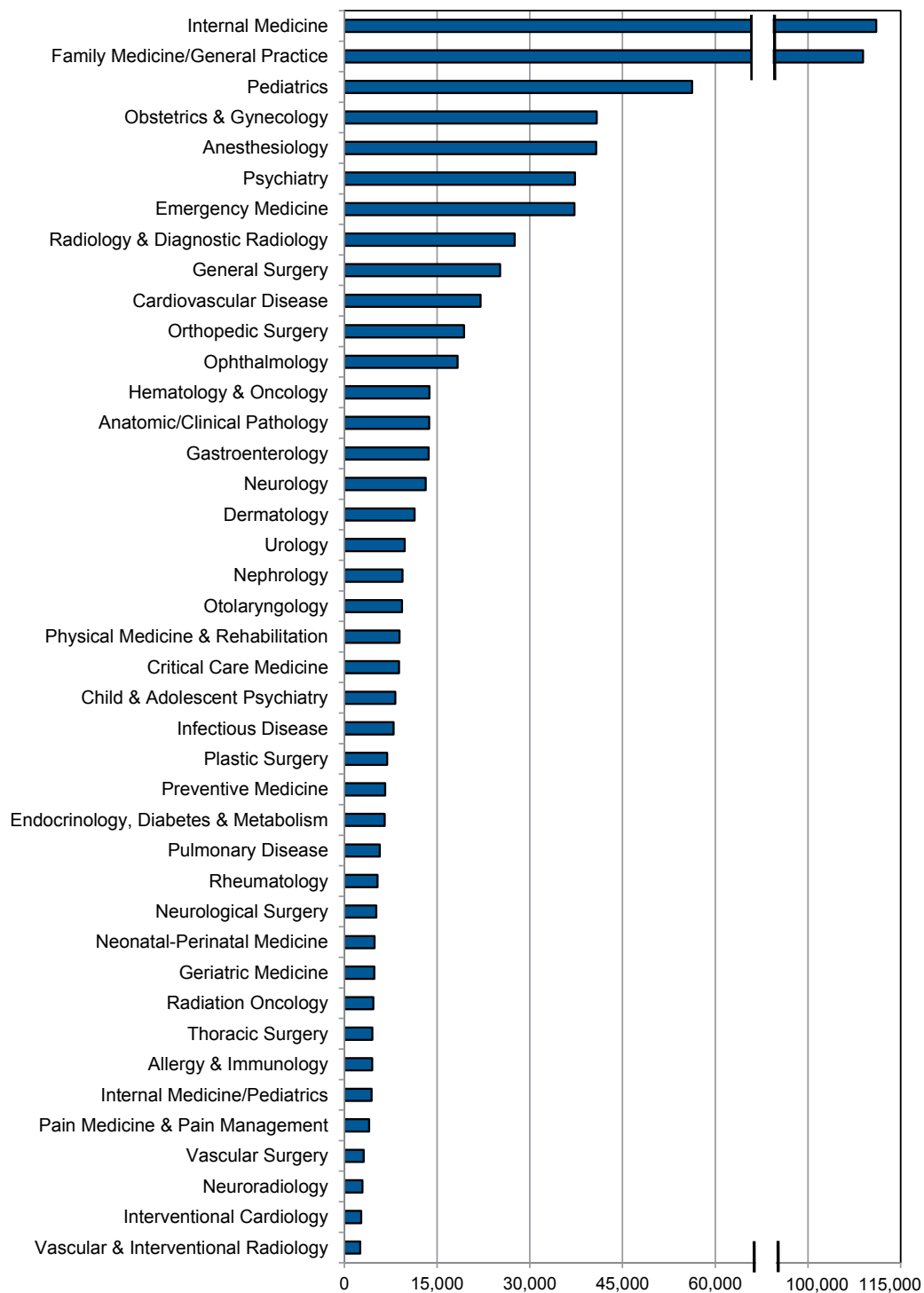
Specialty Grouping	AMA Physician Masterfile Specialties Included	ACGME Specialties and Specialties Included
Allergy & Immunology	Allergy (A) Allergy and Immunology (AI) Immunology (IG)	Allergy and Immunology
Anatomic/Clinical Pathology	Anatomic Pathology (ATP) Anatomic/Clinical Pathology (PTH) Chemical Pathology (PCH) Clinical Pathology (CLP)	Chemical Pathology (Pathology) Pathology-Anatomic & Clinical
Anesthesiology	Anesthesiology (AN)	Anesthesiology
Cardiovascular Disease	Cardiovascular Disease (CD)	Cardiovascular Disease
Child & Adolescent Psychiatry	Child & Adolescent Psychiatry (CHP)	Child & Adolescent Psychiatry (Psychiatry) Pediatrics/Psychiatry/Child & Adolescent Psychiatry
Critical Care Medicine	Critical Care Medicine (CCM, CCA) Pulmonary Critical Care Medicine (PCC)	Critical Care Medicine (Internal Medicine) Critical Care Medicine (Anesthesiology) Pulmonary Disease and Critical Care Medicine (Internal Medicine)
Dermatology	Dermatology (D)	Dermatology

Specialty Grouping	AMA Physician Masterfile Specialties Included	ACGME Specialties and Specialties Included
Emergency Medicine	Emergency Medicine (EM)	Emergency Medicine
Endocrinology, Diabetes & Metabolism	Diabetes (DIA) Endocrinology, Diabetes & Metabolism (END)	Endocrinology, Diabetes & Metabolism
Family Medicine/General Practice	Family Medicine (FM, FP) General Practice (GP)	Family Medicine
Gastroenterology	Gastroenterology (GE)	Gastroenterology
General Surgery	General Surgery (GS)	General Surgery
Geriatric Medicine	Geriatric Medicine (IMG, FPG)	Geriatric Medicine (Family Practice) Geriatric Medicine (Internal Medicine)
Hematology & Oncology	Hematology (HEM) Hematology/Oncology (HO) Medical Oncology (ON)	Hematology (Internal Medicine) Hematology & Oncology (Internal Medicine) Oncology (Internal Medicine)
Infectious Disease	Infectious Disease (ID)	Infectious Disease
Internal Medicine	Internal Medicine (IM)	Internal Medicine Internal Medicine/Family Practice
Internal Medicine/ Pediatrics	Internal Medicine/Pediatrics (MPD)	Internal Medicine/Pediatrics
Interventional Cardiology	Interventional Cardiology (IC)	Interventional Cardiology (Internal Medicine)
Neonatal-Perinatal Medicine	Neonatal-Perinatal Medicine (NPM)	Neonatal-Perinatal Medicine
Nephrology	Nephrology (NEP)	Nephrology
Neurological Surgery	Neurological Surgery (NS)	Neurological Surgery
Neurology	Neurology (N)	Neurology
Neuroradiology	Neuroradiology (RNR)	Neuroradiology (Radiology-Diagnostic)
Obstetrics & Gynecology	Gynecology (GYN) Obstetrics (OBS) Obstetrics & Gynecology (OBG)	Obstetrics & Gynecology
Ophthalmology	Ophthalmology (OPH)	Ophthalmology
Orthopedic Surgery	Orthopedic Surgery (ORS)	Orthopedic Surgery
Otolaryngology	Otolaryngology (OTO)	Otolaryngology
Pain Medicine & Pain Management	Pain Medicine (APM, PMM, PMN) Pain Management (PME, PMP)	Pain Medicine (Multidisciplinary)
Pediatrics	Pediatrics (PD)	Pediatrics

Specialty Grouping	AMA Physician Masterfile Specialties Included	ACGME Specialties and Specialties Included
Physical Medicine & Rehabilitation	Physical Medicine & Rehabilitation (PM)	Physical Medicine & Rehabilitation
Plastic Surgery	Facial Plastic Surgery (FPS) Plastic Surgery (PS, PSI) Plastic Surgery Within The Head & Neck (PSH)	Plastic Surgery Plastic Surgery-Integrated
Preventive Medicine	Aerospace Medicine (AM) General Preventive Medicine (GPM) Occupational Medicine (OM) Public Health & General Preventive Medicine (PHP)	Preventive Medicine
Psychiatry	Addiction Medicine (ADM) Addiction Psychiatry (ADP) Psychiatry (P) Psychoanalysis (PYA) Psychosomatic Medicine (PYM)	Addiction Psychiatry (Psychiatry) Psychiatry Psychosomatic Medicine (Psychiatry)
Pulmonary Disease	Pulmonary Disease (PUD)	Pulmonary Disease (Internal Medicine)
Radiation Oncology	Radiation Oncology (RO)	Radiation Oncology
Radiology & Diagnostic Radiology	Diagnostic Radiology (DR) Radiology (R)	Radiology-Diagnostic
Rheumatology	Rheumatology (RHU)	Rheumatology
Thoracic Surgery	Thoracic Surgery (TS, TSI)	Congenital Cardiac Surgery (Thoracic Surgery) Thoracic Surgery Thoracic Surgery-Integrated
Urology	Urology (U)	Urology
Vascular & Interventional Radiology	Vascular & Interventional Radiology (VIR)	Vascular & Interventional Radiology (Radiology-Diagnostic)
Vascular Surgery	Vascular Surgery (VS, VSI)	Vascular Surgery (General Surgery) Vascular Surgery-Integrated

Note: Codes in parentheses represent the AMA Physician Masterfile Self-Designated Practice Specialties/Areas of Practice.

Figure 1.1 Specialties with the Largest Number of Active Physicians, 2013



Source: AMA Physician Masterfile (December 2013)

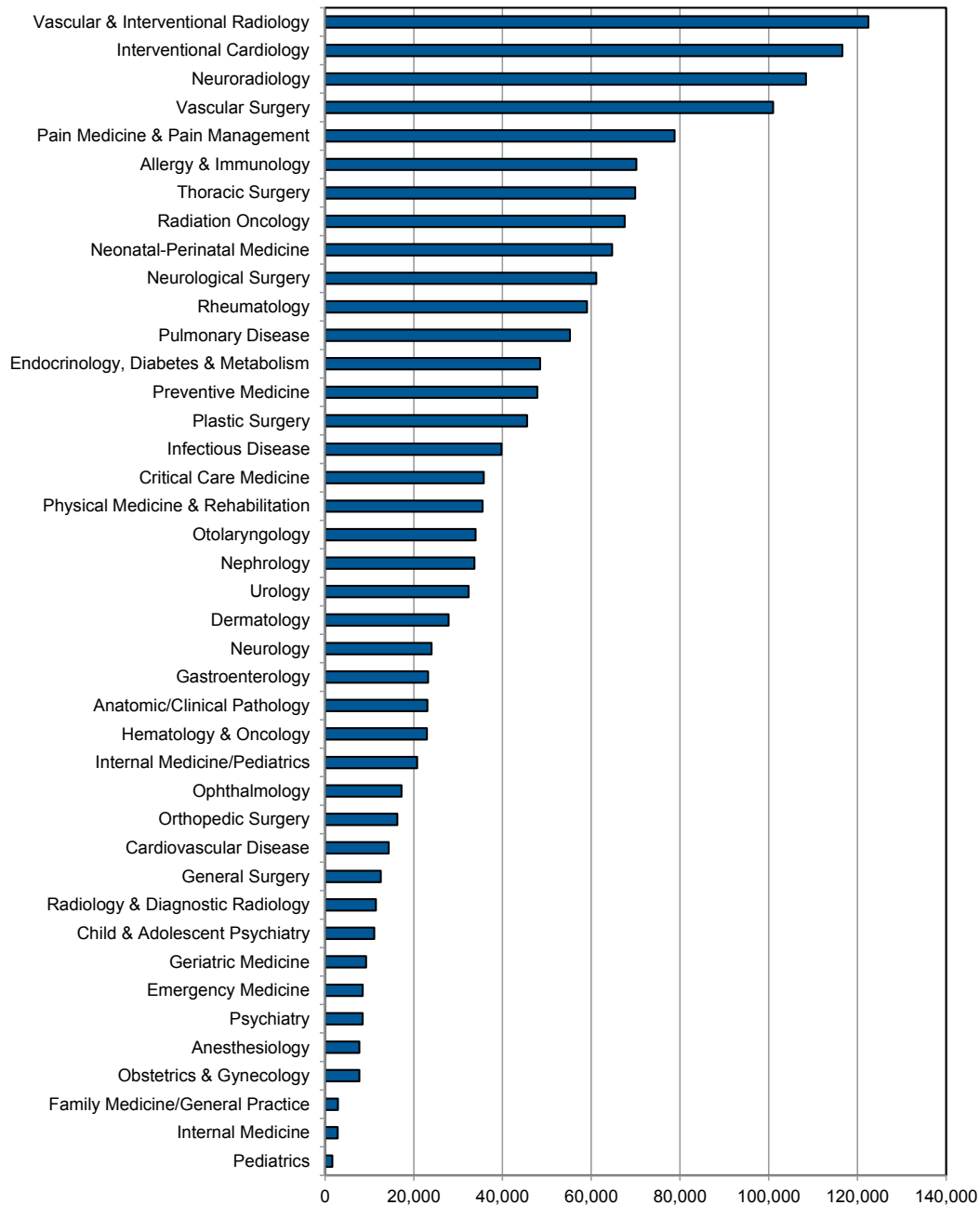
Table 1.1 Number of Active Physicians in the Largest Specialties by Major Professional Activity, 2013

Specialty	Total Active Physicians	Patient Care	Teaching	Research	Other ¹
All Specialties	829,962	740,439	9,589	13,452	66,482
Allergy & Immunology	4,504	3,946	36	293	229
Anatomic/Clinical Pathology	13,710	10,210	289	575	2,636
Anesthesiology	40,758	38,427	418	195	1,718
Cardiovascular Disease	22,020	20,370	263	625	762
Child & Adolescent Psychiatry	8,237	7,380	114	114	629
Critical Care Medicine	8,832	7,826	86	112	808
Dermatology	11,363	10,841	74	101	347
Emergency Medicine	37,241	34,780	315	100	2,046
Endocrinology, Diabetes & Metabolism	6,519	5,355	123	573	468
Family Medicine/General Practice	108,917	101,764	1,608	261	5,284
Gastroenterology	13,626	12,692	143	302	489
General Surgery	25,187	22,231	226	147	2,583
Geriatric Medicine	4,833	4,129	95	106	503
Hematology & Oncology	13,774	11,769	133	917	955
Infectious Disease	7,952	6,154	220	722	856
Internal Medicine	111,047	99,421	1,217	1,564	8,845
Internal Medicine/Pediatrics	4,396	4,014	43	29	310
Interventional Cardiology	2,711	2,520	8	4	179
Neonatal-Perinatal Medicine	4,886	4,197	92	196	401
Nephrology	9,394	8,347	96	339	612
Neurological Surgery	5,171	4,828	28	34	281
Neurology	13,156	11,457	192	650	857
Neuroradiology	2,917	2,582	18	6	311
Obstetrics & Gynecology	40,826	38,457	405	203	1,761
Ophthalmology	18,317	17,382	105	134	696
Orthopedic Surgery	19,374	18,622	107	65	580
Otolaryngology	9,320	8,906	56	27	331
Pain Medicine & Pain Management	4,014	3,814	13	9	178
Pediatrics	56,262	51,327	755	700	3,480
Physical Medicine & Rehabilitation	8,906	8,201	40	47	618
Plastic Surgery	6,942	6,710	36	19	177
Preventive Medicine	6,606	4,061	144	497	1,904
Psychiatry	37,296	32,846	519	790	3,141
Pulmonary Disease	5,726	5,039	151	320	216
Radiation Oncology	4,682	4,410	26	33	213
Radiology & Diagnostic Radiology	27,570	25,211	323	165	1,871
Rheumatology	5,357	4,656	80	273	348
Thoracic Surgery	4,521	4,229	32	46	214
Urology	9,771	9,353	63	39	316
Vascular & Interventional Radiology	2,581	2,315	9	5	252
Vascular Surgery	3,130	2,923	28	16	252

Source: *AMA Physician Masterfile (December 2013)*

¹ Other includes physicians whose self-designated major professional activity was "Administration," "Not Classified," or "Other."

Figure 1.2 Number of People per Active Physician by Specialty, 2013



Source: AMA Physician Masterfile (December 2013) and Annual Estimates of the Resident Population by Single Year of Age and Sex for the United States: April 1, 2010 to July 1, 2013 from the U.S. Census Bureau, Population Division Release Date: June 2014
Note: The population under age 21 was used in calculations for Pediatrics, Child and Adolescent Psychiatry, and Internal Medicine/Pediatrics. The population over age 64 was used in calculations for Geriatric Medicine.

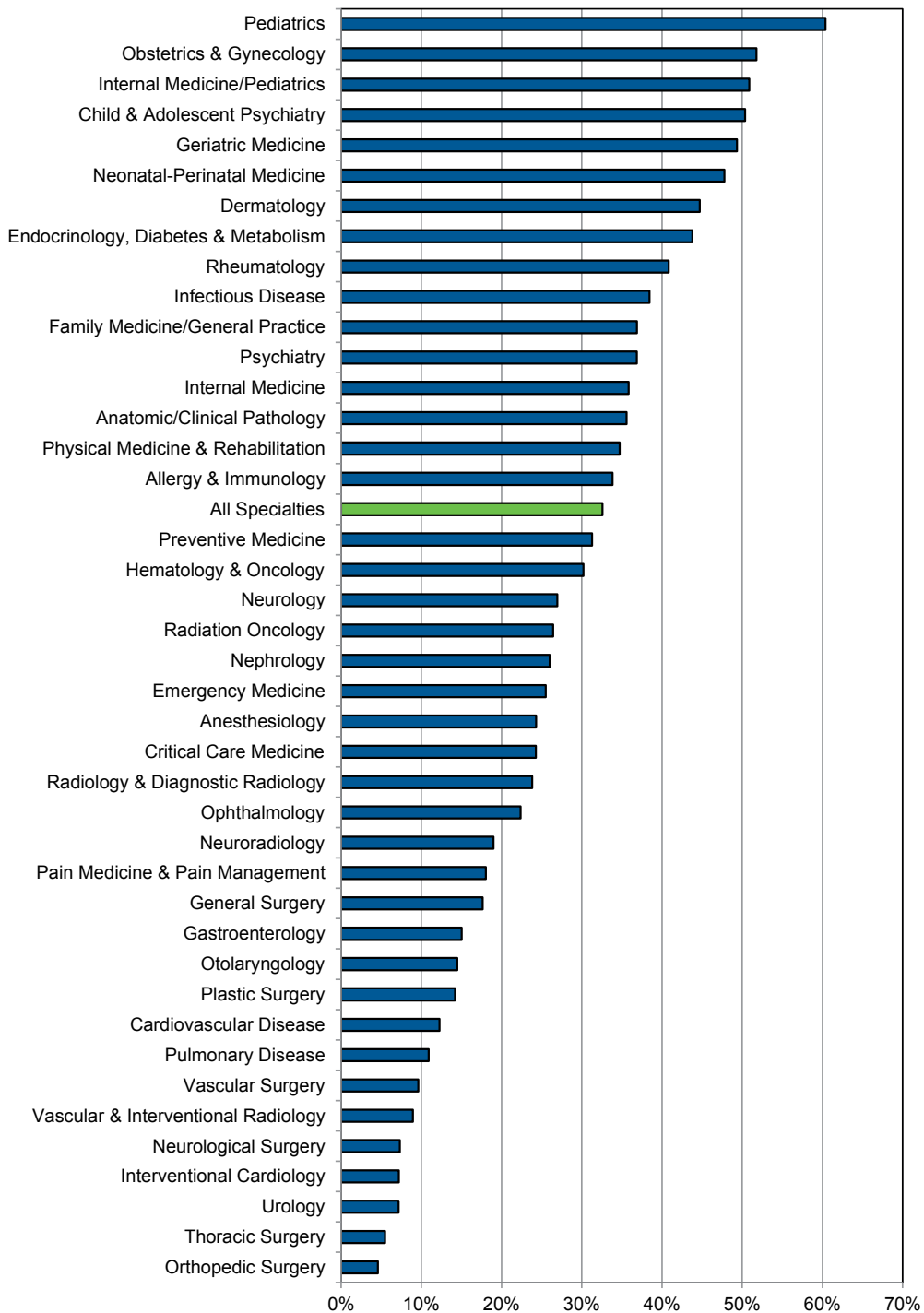
Table 1.2 Number of People per Active Physician by Specialty, 2013

Specialty	Total Active Physicians	People Per Physician
All Specialties	829,962	381
Allergy & Immunology	4,504	70,188
Anatomic/Clinical Pathology	13,710	23,058
Anesthesiology	40,758	7,756
Cardiovascular Disease	22,020	14,356
Child & Adolescent Psychiatry	8,237	11,080
Critical Care Medicine	8,832	35,794
Dermatology	11,363	27,821
Emergency Medicine	37,241	8,489
Endocrinology, Diabetes & Metabolism	6,519	48,493
Family Medicine/General Practice	108,917	2,902
Gastroenterology	13,626	23,200
General Surgery	25,187	12,551
Geriatric Medicine	4,833	9,250
Hematology & Oncology	13,774	22,951
Infectious Disease	7,952	39,755
Internal Medicine	111,047	2,847
Internal Medicine/Pediatrics	4,396	20,760
Interventional Cardiology	2,711	116,610
Neonatal-Perinatal Medicine	4,886	64,701
Nephrology	9,394	33,652
Neurological Surgery	5,171	61,135
Neurology	13,156	24,029
Neuroradiology	2,917	108,375
Obstetrics & Gynecology	40,826	7,743
Ophthalmology	18,317	17,259
Orthopedic Surgery	19,374	16,317
Otolaryngology	9,320	33,919
Pain Medicine & Pain Management	4,014	78,757
Pediatrics	56,262	1,622
Physical Medicine & Rehabilitation	8,906	35,496
Plastic Surgery	6,942	45,539
Preventive Medicine	6,606	47,855
Psychiatry	37,296	8,476
Pulmonary Disease	5,726	55,209
Radiation Oncology	4,682	67,520
Radiology & Diagnostic Radiology	27,570	11,466
Rheumatology	5,357	59,012
Thoracic Surgery	4,521	69,925
Urology	9,771	32,354
Vascular & Interventional Radiology	2,581	122,483
Vascular Surgery	3,130	101,000

Source: AMA Physician Masterfile (December 2013) and Annual Estimates of the Resident Population by Single Year of Age and Sex for the United States: April 1, 2010 to July 1, 2013 from the U.S. Census Bureau, Population Division Release Date: June 2014

Note: The population under age 21 was used in calculations for Pediatrics, Child and Adolescent Psychiatry, and Internal Medicine/Pediatrics. The population over age 64 was used in calculations for Geriatric Medicine.

Figure 1.3 Percentage of Active Physicians Who Are Female by Specialty, 2013



Source: AMA Physician Masterfile (December 2013)

Note: Excludes 1,093 active physicians whose sex is unknown.

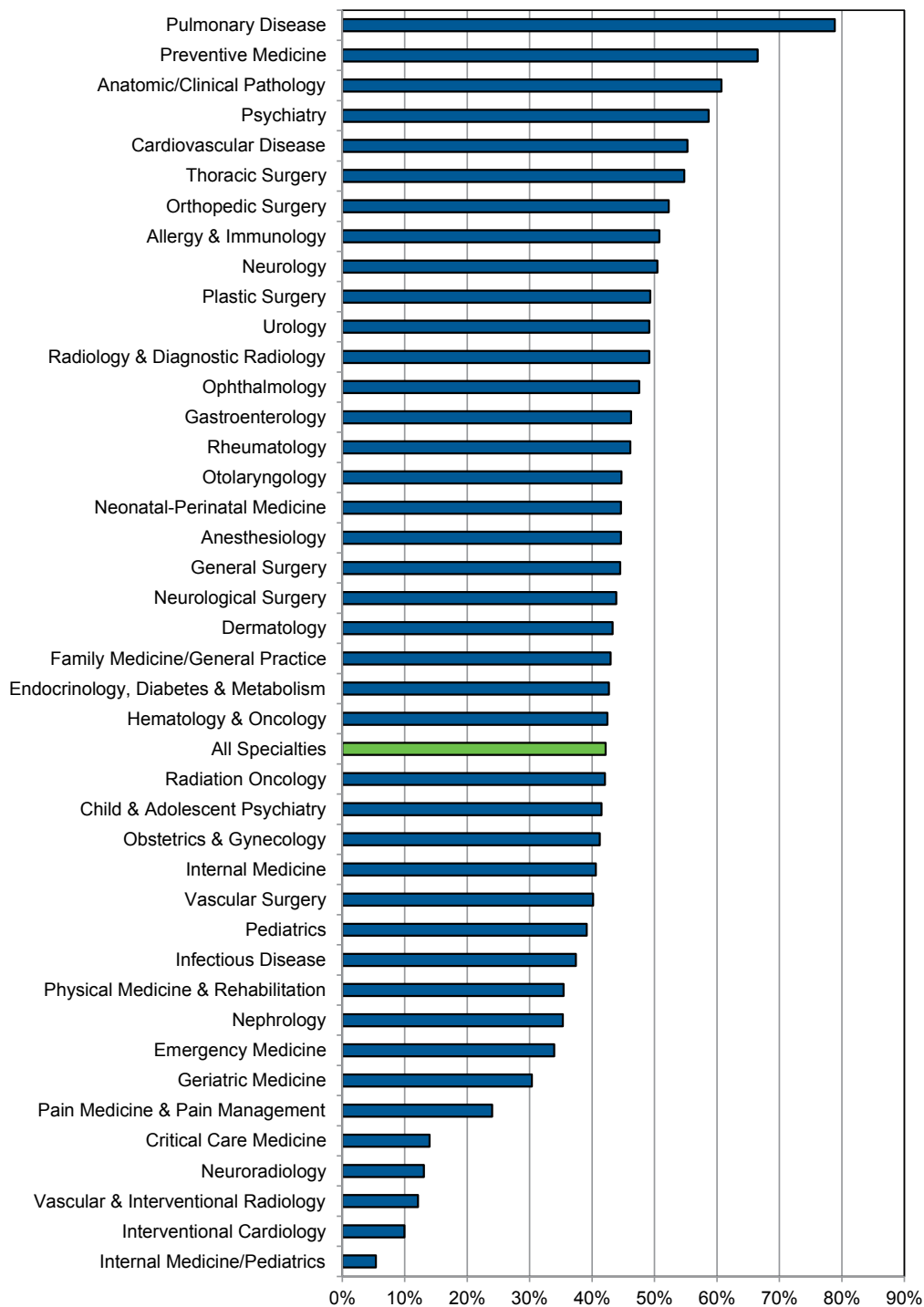
Table 1.3 Number and Percentage of Active Physicians by Sex and Specialty, 2013

Specialty	Total Active Physicians	Male		Female	
		Number	Percent	Number	Percent
All Specialties	828,869	558,794	67.4	270,075	32.6
Allergy & Immunology	4,502	2,978	66.1	1,524	33.9
Anatomic/Clinical Pathology	13,701	8,825	64.4	4,876	35.6
Anesthesiology	40,714	30,814	75.7	9,900	24.3
Cardiovascular Disease	22,001	19,300	87.7	2,701	12.3
Child & Adolescent Psychiatry	8,232	4,085	49.6	4,147	50.4
Critical Care Medicine	8,816	6,676	75.7	2,140	24.3
Dermatology	11,353	6,277	55.3	5,076	44.7
Emergency Medicine	37,210	27,713	74.5	9,497	25.5
Endocrinology, Diabetes & Metabolism	6,509	3,658	56.2	2,851	43.8
Family Medicine/General Practice	108,751	68,647	63.1	40,104	36.9
Gastroenterology	13,607	11,562	85.0	2,045	15.0
General Surgery	25,164	20,727	82.4	4,437	17.6
Geriatric Medicine	4,827	2,445	50.7	2,382	49.3
Hematology & Oncology	13,755	9,600	69.8	4,155	30.2
Infectious Disease	7,938	4,887	61.6	3,051	38.4
Internal Medicine	110,823	71,096	64.2	39,727	35.8
Internal Medicine/Pediatrics	4,394	2,158	49.1	2,236	50.9
Interventional Cardiology	2,704	2,509	92.8	195	7.2
Neonatal-Perinatal Medicine	4,882	2,549	52.2	2,333	47.8
Nephrology	9,381	6,943	74.0	2,438	26.0
Neurological Surgery	5,168	4,790	92.7	378	7.3
Neurology	13,142	9,601	73.1	3,541	26.9
Neuroradiology	2,911	2,358	81.0	553	19.0
Obstetrics & Gynecology	40,790	19,669	48.2	21,121	51.8
Ophthalmology	18,308	14,211	77.6	4,097	22.4
Orthopedic Surgery	19,372	18,483	95.4	889	4.6
Otolaryngology	9,314	7,966	85.5	1,348	14.5
Pain Medicine & Pain Management	4,002	3,280	82.0	722	18.0
Pediatrics	56,210	22,266	39.6	33,944	60.4
Physical Medicine & Rehabilitation	8,879	5,796	65.3	3,083	34.7
Plastic Surgery	6,939	5,954	85.8	985	14.2
Preventive Medicine	6,602	4,536	68.7	2,066	31.3
Psychiatry	37,277	23,535	63.1	13,742	36.9
Pulmonary Disease	5,724	5,100	89.1	624	10.9
Radiation Oncology	4,680	3,443	73.6	1,237	26.4
Radiology & Diagnostic Radiology	27,553	20,987	76.2	6,566	23.8
Rheumatology	5,345	3,162	59.2	2,183	40.8
Thoracic Surgery	4,520	4,272	94.5	248	5.5
Urology	9,767	9,066	92.8	701	7.2
Vascular & Interventional Radiology	2,580	2,349	91.0	231	9.0
Vascular Surgery	3,128	2,827	90.4	301	9.6

Source: AMA Physician Masterfile (December 2013)

Note: Excludes 1,093 active physicians whose sex is unknown.

Figure 1.4 Percentage of Active Physicians Who Are Age 55 or Older by Specialty, 2013



Source: AMA Physician Masterfile (December 2013)

Note: Excludes 1,644 active physicians whose age is unknown.

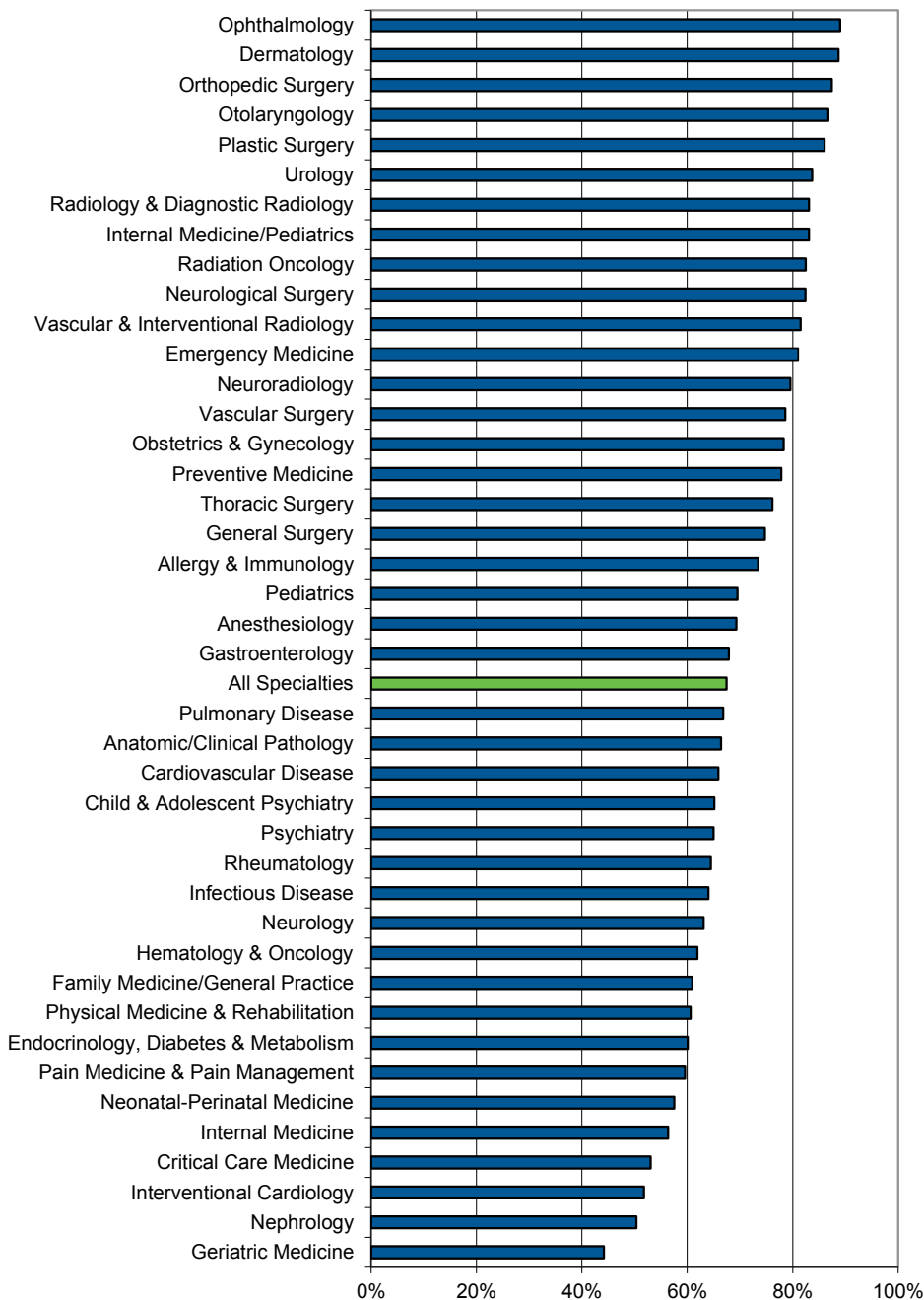
Table 1.4 Number and Percentage of Active Physicians by Age and Specialty, 2013

Specialty	Total Active Physicians	Under Age 55		Age 55 or Older	
		Number	Percent	Number	Percent
All Specialties	828,318	479,070	57.4	349,248	42.6
Allergy & Immunology	4,504	2,217	49.2	2,287	50.8
Anatomic/Clinical Pathology	13,707	5,385	39.3	8,322	60.7
Anesthesiology	40,749	22,564	55.4	18,185	44.6
Cardiovascular Disease	22,015	9,847	44.7	12,168	55.3
Child & Adolescent Psychiatry	8,236	4,818	58.5	3,418	41.5
Critical Care Medicine	8,831	7,596	86.0	1,235	14.0
Dermatology	11,358	6,438	56.7	4,920	43.3
Emergency Medicine	37,183	24,545	66.0	12,638	34.0
Endocrinology, Diabetes & Metabolism	6,518	3,735	57.3	2,783	42.7
Family Medicine/General Practice	108,697	61,910	57.0	46,787	43.0
Gastroenterology	13,625	7,327	53.8	6,298	46.2
General Surgery	25,176	13,970	55.5	11,206	44.5
Geriatric Medicine	4,832	3,365	69.6	1,467	30.4
Hematology & Oncology	13,774	7,926	57.5	5,848	42.5
Infectious Disease	7,950	4,975	62.6	2,975	37.4
Internal Medicine	110,972	65,890	59.4	45,082	40.6
Internal Medicine/Pediatrics	4,395	4,158	94.6	237	5.4
Interventional Cardiology	2,711	2,441	90.0	270	10.0
Neonatal-Perinatal Medicine	4,886	2,705	55.4	2,181	44.6
Nephrology	9,393	6,074	64.7	3,319	35.3
Neurological Surgery	5,170	2,902	56.1	2,268	43.9
Neurology	13,150	6,511	49.5	6,639	50.5
Neuroradiology	2,917	2,536	86.9	381	13.1
Obstetrics & Gynecology	40,806	23,970	58.7	16,836	41.3
Ophthalmology	18,311	9,605	52.5	8,706	47.5
Orthopedic Surgery	19,367	9,241	47.7	10,126	52.3
Otolaryngology	9,320	5,154	55.3	4,166	44.7
Pain Medicine & Pain Management	4,014	3,051	76.0	963	24.0
Pediatrics	56,232	34,211	60.8	22,021	39.2
Physical Medicine & Rehabilitation	8,903	5,746	64.5	3,157	35.5
Plastic Surgery	6,939	3,515	50.7	3,424	49.3
Preventive Medicine	6,599	2,204	33.4	4,395	66.6
Psychiatry	37,285	15,403	41.3	21,882	58.7
Pulmonary Disease	5,725	1,210	21.1	4,515	78.9
Radiation Oncology	4,682	2,712	57.9	1,970	42.1
Radiology & Diagnostic Radiology	27,563	14,013	50.8	13,550	49.2
Rheumatology	5,356	2,886	53.9	2,470	46.1
Thoracic Surgery	4,521	2,045	45.2	2,476	54.8
Urology	9,769	4,965	50.8	4,804	49.2
Vascular & Interventional Radiology	2,580	2,267	87.9	313	12.1
Vascular Surgery	3,130	1,873	59.8	1,257	40.2

Source: AMA Physician Masterfile (December 2013)

Note: Excludes 1,644 active physicians whose age is unknown.

Figure 1.5 Percentage of Active Physicians with a U.S. Doctor of Medicine (U.S. M.D.) Degree by Specialty, 2013



Source: AMA Physician Masterfile (December 2013)
Note: Excludes 48 active physicians whose degree type is unknown.

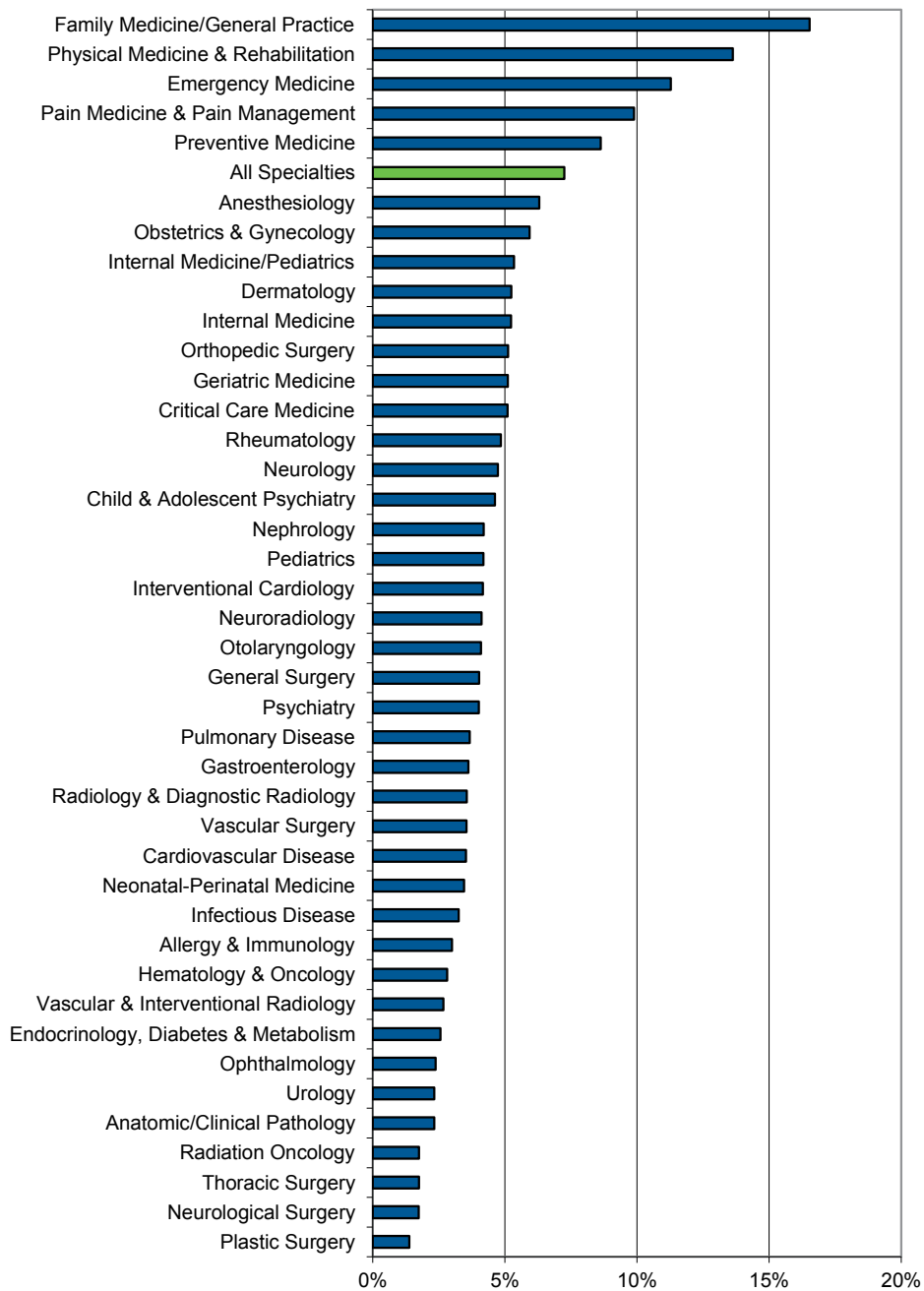
Table 1.5 Number and Percentage of Active Physicians with a U.S. Doctor of Medicine (U.S. M.D.) Degree by Specialty, 2013

Specialty	Total Active Physicians	Active U.S. M.D.s	Percent
All Specialties	829,914	559,731	67.4
Allergy & Immunology	4,504	3,308	73.4
Anatomic/Clinical Pathology	13,710	9,102	66.4
Anesthesiology	40,758	28,248	69.3
Cardiovascular Disease	22,020	14,505	65.9
Child & Adolescent Psychiatry	8,237	5,364	65.1
Critical Care Medicine	8,831	4,683	53.0
Dermatology	11,363	10,079	88.7
Emergency Medicine	37,241	30,179	81.0
Endocrinology, Diabetes & Metabolism	6,519	3,916	60.1
Family Medicine/General Practice	108,912	66,353	60.9
Gastroenterology	13,626	9,249	67.9
General Surgery	25,185	18,821	74.7
Geriatric Medicine	4,833	2,134	44.2
Hematology & Oncology	13,774	8,526	61.9
Infectious Disease	7,952	5,090	64.0
Internal Medicine	111,042	62,580	56.4
Internal Medicine/Pediatrics	4,396	3,652	83.1
Interventional Cardiology	2,711	1,403	51.8
Neonatal-Perinatal Medicine	4,886	2,810	57.5
Nephrology	9,394	4,729	50.3
Neurological Surgery	5,171	4,261	82.4
Neurology	13,156	8,302	63.1
Neuroradiology	2,917	2,321	79.6
Obstetrics & Gynecology	40,826	31,971	78.3
Ophthalmology	18,317	16,304	89.0
Orthopedic Surgery	19,374	16,936	87.4
Otolaryngology	9,320	8,084	86.7
Pain Medicine & Pain Management	4,014	2,392	59.6
Pediatrics	56,262	39,114	69.5
Physical Medicine & Rehabilitation	8,906	5,400	60.6
Plastic Surgery	6,942	5,973	86.0
Preventive Medicine	6,606	5,142	77.8
Psychiatry	37,295	24,225	65.0
Pulmonary Disease	5,726	3,826	66.8
Radiation Oncology	4,682	3,862	82.5
Radiology & Diagnostic Radiology	27,570	22,906	83.1
Rheumatology	5,357	3,453	64.5
Thoracic Surgery	4,521	3,443	76.2
Urology	9,771	8,177	83.7
Vascular & Interventional Radiology	2,581	2,103	81.5
Vascular Surgery	3,130	2,460	78.6

Source: AMA Physician Masterfile (December 2013)

Note: Excludes 48 active physicians whose degree type is unknown.

Figure 1.6 Percentage of Active Physicians with a Doctor of Osteopathic Medicine (D.O.) Degree by Specialty, 2013



Source: AMA Physician Masterfile (December 2013)
 Note: Excludes 48 active physicians whose degree type is unknown.

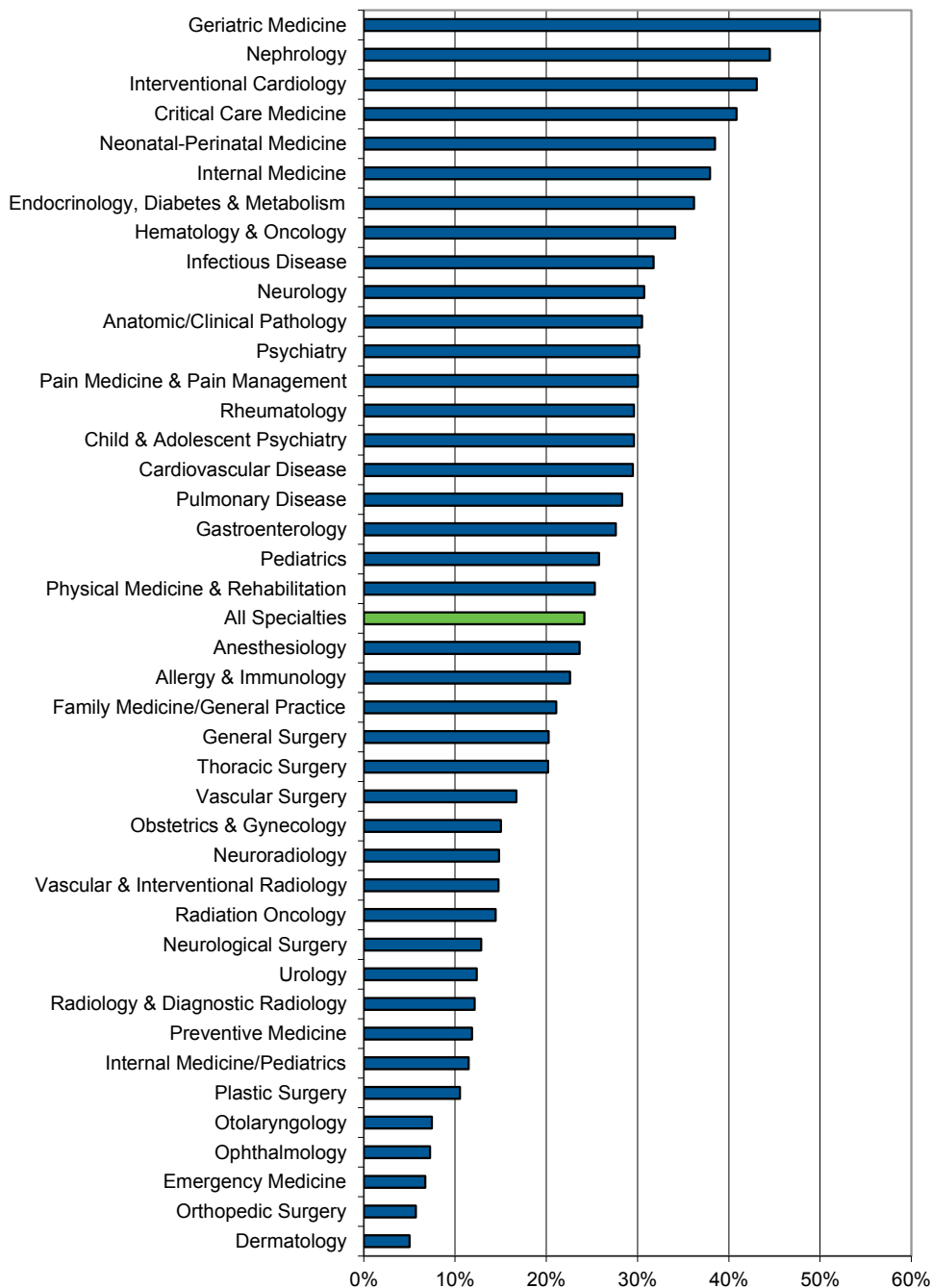
Table 1.6 Number and Percentage of Active Physicians with a Doctor of Osteopathic Medicine (D.O.) Degree by Specialty, 2013

Specialty	Total Active Physicians	Active D.O.s	Percent
All Specialties	829,914	60,172	7.3
Allergy & Immunology	4,504	135	3.0
Anatomic/Clinical Pathology	13,710	319	2.3
Anesthesiology	40,758	2,567	6.3
Cardiovascular Disease	22,020	777	3.5
Child & Adolescent Psychiatry	8,237	381	4.6
Critical Care Medicine	8,831	451	5.1
Dermatology	11,363	596	5.2
Emergency Medicine	37,241	4,200	11.3
Endocrinology, Diabetes & Metabolism	6,519	167	2.6
Family Medicine/General Practice	108,912	18,005	16.5
Gastroenterology	13,626	493	3.6
General Surgery	25,185	1,014	4.0
Geriatric Medicine	4,833	247	5.1
Hematology & Oncology	13,774	388	2.8
Infectious Disease	7,952	259	3.3
Internal Medicine	111,042	5,810	5.2
Internal Medicine/Pediatrics	4,396	235	5.3
Interventional Cardiology	2,711	113	4.2
Neonatal-Perinatal Medicine	4,886	169	3.5
Nephrology	9,394	394	4.2
Neurological Surgery	5,171	90	1.7
Neurology	13,156	623	4.7
Neuroradiology	2,917	120	4.1
Obstetrics & Gynecology	40,826	2,422	5.9
Ophthalmology	18,317	436	2.4
Orthopedic Surgery	19,374	992	5.1
Otolaryngology	9,320	382	4.1
Pain Medicine & Pain Management	4,014	397	9.9
Pediatrics	56,262	2,358	4.2
Physical Medicine & Rehabilitation	8,906	1,214	13.6
Plastic Surgery	6,942	96	1.4
Preventive Medicine	6,606	570	8.6
Psychiatry	37,295	1,499	4.0
Pulmonary Disease	5,726	210	3.7
Radiation Oncology	4,682	82	1.8
Radiology & Diagnostic Radiology	27,570	982	3.6
Rheumatology	5,357	260	4.9
Thoracic Surgery	4,521	79	1.7
Urology	9,771	228	2.3
Vascular & Interventional Radiology	2,581	69	2.7
Vascular Surgery	3,130	111	3.5

Source: AMA Physician Masterfile (December 2013)

Note: Excludes 48 active physicians whose degree type is unknown.

Figure 1.7 Percentage of Active Physicians Who Are International Medical Graduates (IMGs) by Specialty, 2013



Source: AMA Physician Masterfile (December 2013)
Note: Excludes 48 active physicians whose degree type is unknown.

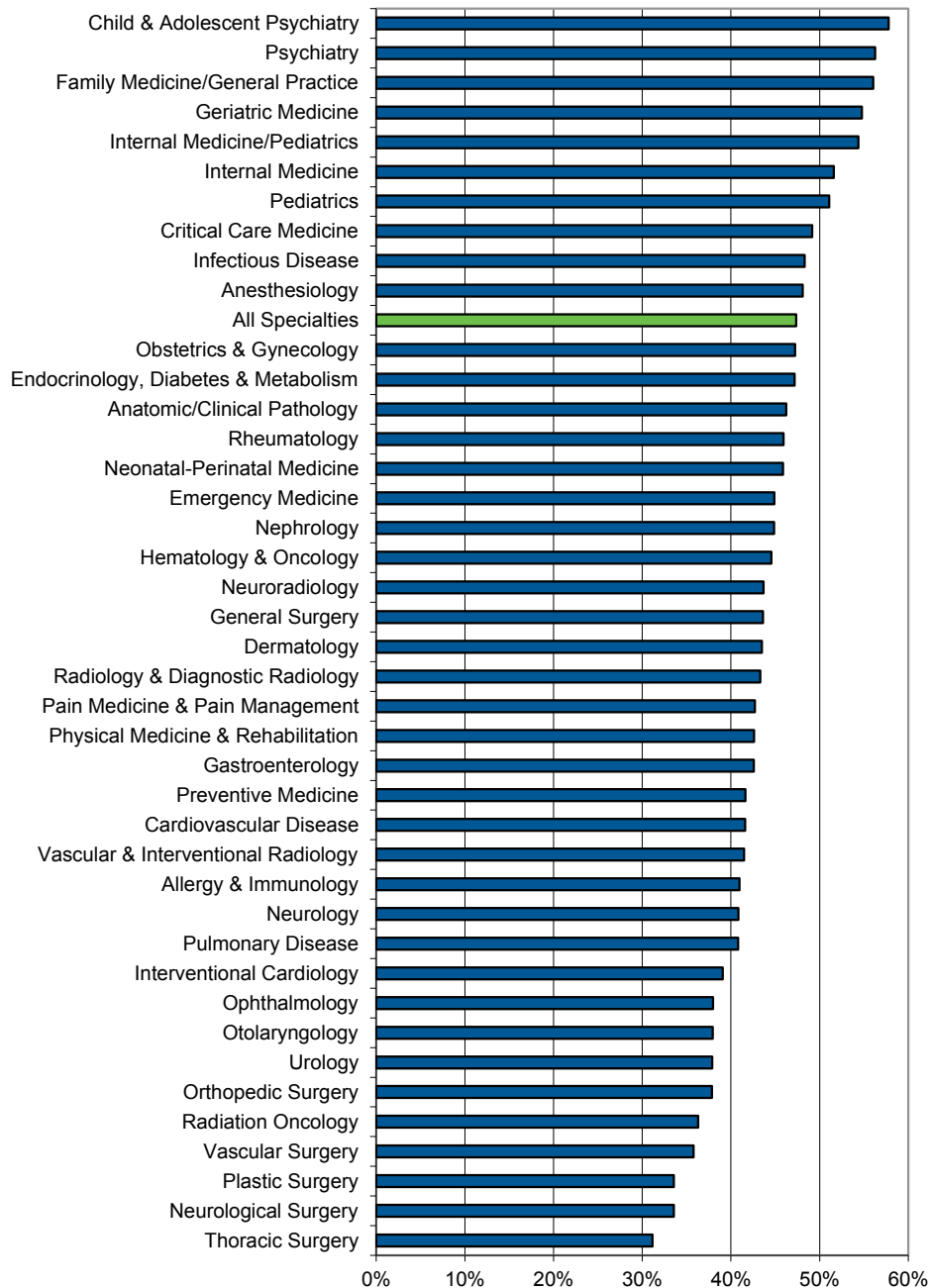
Table 1.7 Number and Percentage of Active Physicians Who Are International Medical Graduates (IMGs) by Specialty, 2013

Specialty	Total Active Physicians	Active IMGs	Percent
All Specialties	829,914	200,610	24.2
Allergy & Immunology	4,504	1,018	22.6
Anatomic/Clinical Pathology	13,710	4,182	30.5
Anesthesiology	40,758	9,640	23.7
Cardiovascular Disease	22,020	6,495	29.5
Child & Adolescent Psychiatry	8,237	2,437	29.6
Critical Care Medicine	8,831	3,608	40.9
Dermatology	11,363	570	5.0
Emergency Medicine	37,241	2,514	6.8
Endocrinology, Diabetes & Metabolism	6,519	2,359	36.2
Family Medicine/General Practice	108,912	22,965	21.1
Gastroenterology	13,626	3,762	27.6
General Surgery	25,185	5,100	20.3
Geriatric Medicine	4,833	2,416	50.0
Hematology & Oncology	13,774	4,698	34.1
Infectious Disease	7,952	2,526	31.8
Internal Medicine	111,042	42,141	38.0
Internal Medicine/Pediatrics	4,396	505	11.5
Interventional Cardiology	2,711	1,167	43.0
Neonatal-Perinatal Medicine	4,886	1,880	38.5
Nephrology	9,394	4,180	44.5
Neurological Surgery	5,171	665	12.9
Neurology	13,156	4,042	30.7
Neuroradiology	2,917	432	14.8
Obstetrics & Gynecology	40,826	6,134	15.0
Ophthalmology	18,317	1,328	7.3
Orthopedic Surgery	19,374	1,105	5.7
Otolaryngology	9,320	694	7.4
Pain Medicine & Pain Management	4,014	1,205	30.0
Pediatrics	56,262	14,509	25.8
Physical Medicine & Rehabilitation	8,906	2,254	25.3
Plastic Surgery	6,942	732	10.5
Preventive Medicine	6,606	783	11.9
Psychiatry	37,295	11,250	30.2
Pulmonary Disease	5,726	1,621	28.3
Radiation Oncology	4,682	676	14.4
Radiology & Diagnostic Radiology	27,570	3,345	12.1
Rheumatology	5,357	1,586	29.6
Thoracic Surgery	4,521	913	20.2
Urology	9,771	1,208	12.4
Vascular & Interventional Radiology	2,581	381	14.8
Vascular Surgery	3,130	523	16.7

Source: AMA Physician Masterfile (December 2013)

Note: Excludes 48 active physicians whose degree type is unknown.

Figure 1.8 Percentage of Active Physicians Practicing in the Same State Where They Completed Graduate Medical Education (GME) by Specialty, 2013



Source: AMA Physician Masterfile (December 2013)

Note: Excludes 44,743 active physicians whose GME program information is unknown.

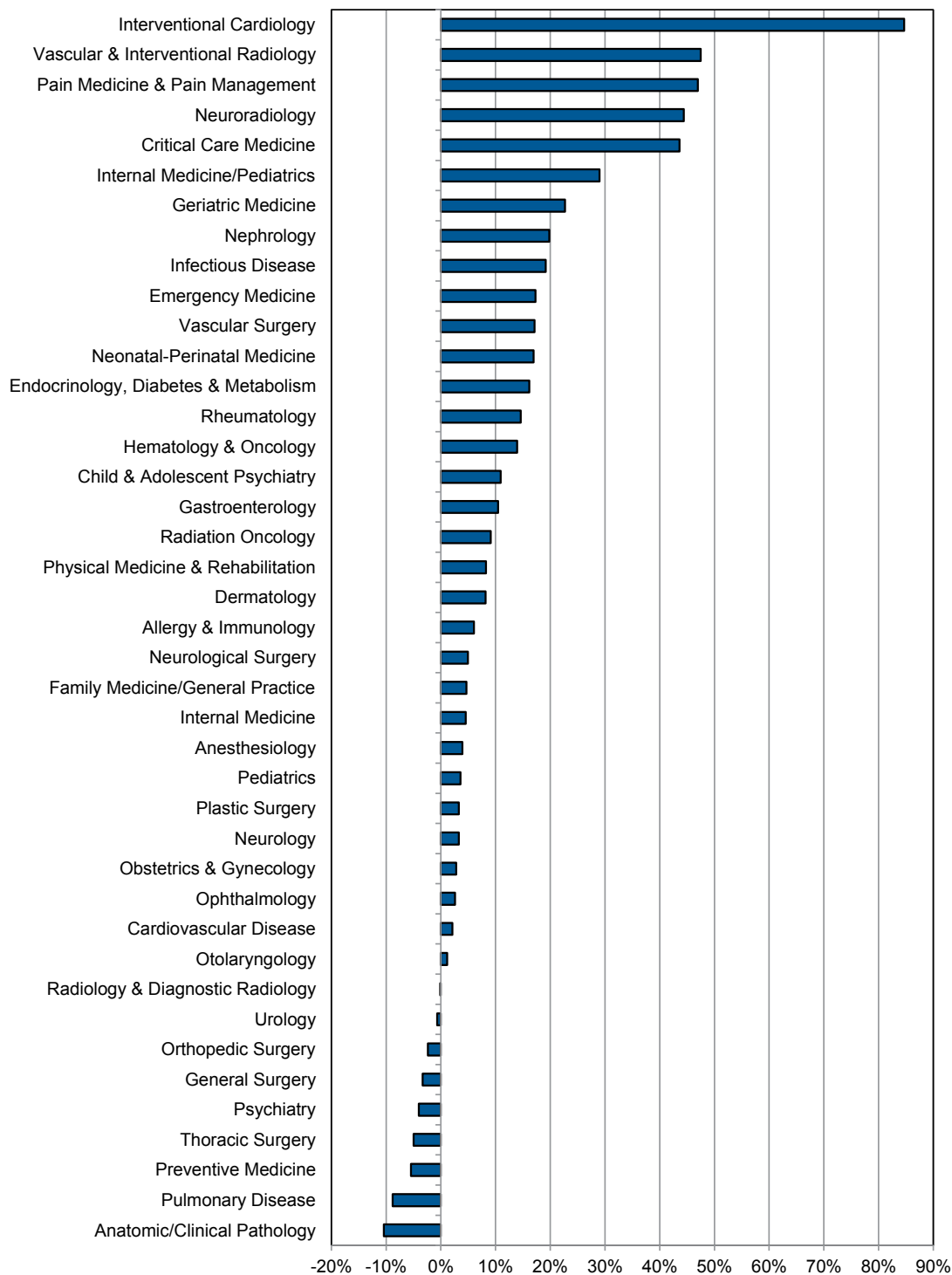
Table 1.8 Number and Percentage of Active Physicians Practicing in the State Where They Completed Graduated Medical Education (GME) by Specialty, 2013

Specialty	Total Active Physicians	Practicing in Same State as GME	Percent
All Specialties	785,219	371,866	47.4
Allergy & Immunology	4,402	1,803	41.0
Anatomic/Clinical Pathology	13,432	6,210	46.2
Anesthesiology	39,840	19,160	48.1
Cardiovascular Disease	21,427	8,912	41.6
Child & Adolescent Psychiatry	8,200	4,739	57.8
Critical Care Medicine	8,780	4,316	49.2
Dermatology	11,095	4,824	43.5
Emergency Medicine	35,717	16,033	44.9
Endocrinology, Diabetes & Metabolism	6,331	2,987	47.2
Family Medicine/General Practice	99,301	55,645	56.0
Gastroenterology	13,353	5,685	42.6
General Surgery	24,503	10,690	43.6
Geriatric Medicine	4,726	2,589	54.8
Hematology & Oncology	13,457	5,996	44.6
Infectious Disease	7,851	3,793	48.3
Internal Medicine	108,535	56,001	51.6
Internal Medicine/Pediatrics	4,382	2,383	54.4
Interventional Cardiology	2,690	1,051	39.1
Neonatal-Perinatal Medicine	4,806	2,205	45.9
Nephrology	9,207	4,130	44.9
Neurological Surgery	4,998	1,677	33.6
Neurology	12,886	5,263	40.8
Neuroradiology	2,898	1,266	43.7
Obstetrics & Gynecology	39,955	18,872	47.2
Ophthalmology	17,877	6,787	38.0
Orthopedic Surgery	18,582	7,033	37.8
Otolaryngology	9,035	3,428	37.9
Pain Medicine & Pain Management	3,961	1,692	42.7
Pediatrics	55,404	28,303	51.1
Physical Medicine & Rehabilitation	8,821	3,759	42.6
Plastic Surgery	6,801	2,283	33.6
Preventive Medicine	6,242	2,599	41.6
Psychiatry	36,753	20,682	56.3
Pulmonary Disease	5,546	2,264	40.8
Radiation Oncology	4,589	1,666	36.3
Radiology & Diagnostic Radiology	26,899	11,650	43.3
Rheumatology	5,250	2,412	45.9
Thoracic Surgery	4,384	1,366	31.2
Urology	9,543	3,615	37.9
Vascular & Interventional Radiology	2,564	1,064	41.5
Vascular Surgery	3,071	1,099	35.8

Source: AMA Physician Masterfile (December 2013)

Note: Excludes 44,743 active physicians whose GME program information is unknown.

Figure 1.9 Percent Change in the Number of Active Physicians by Specialty, 2008-2013



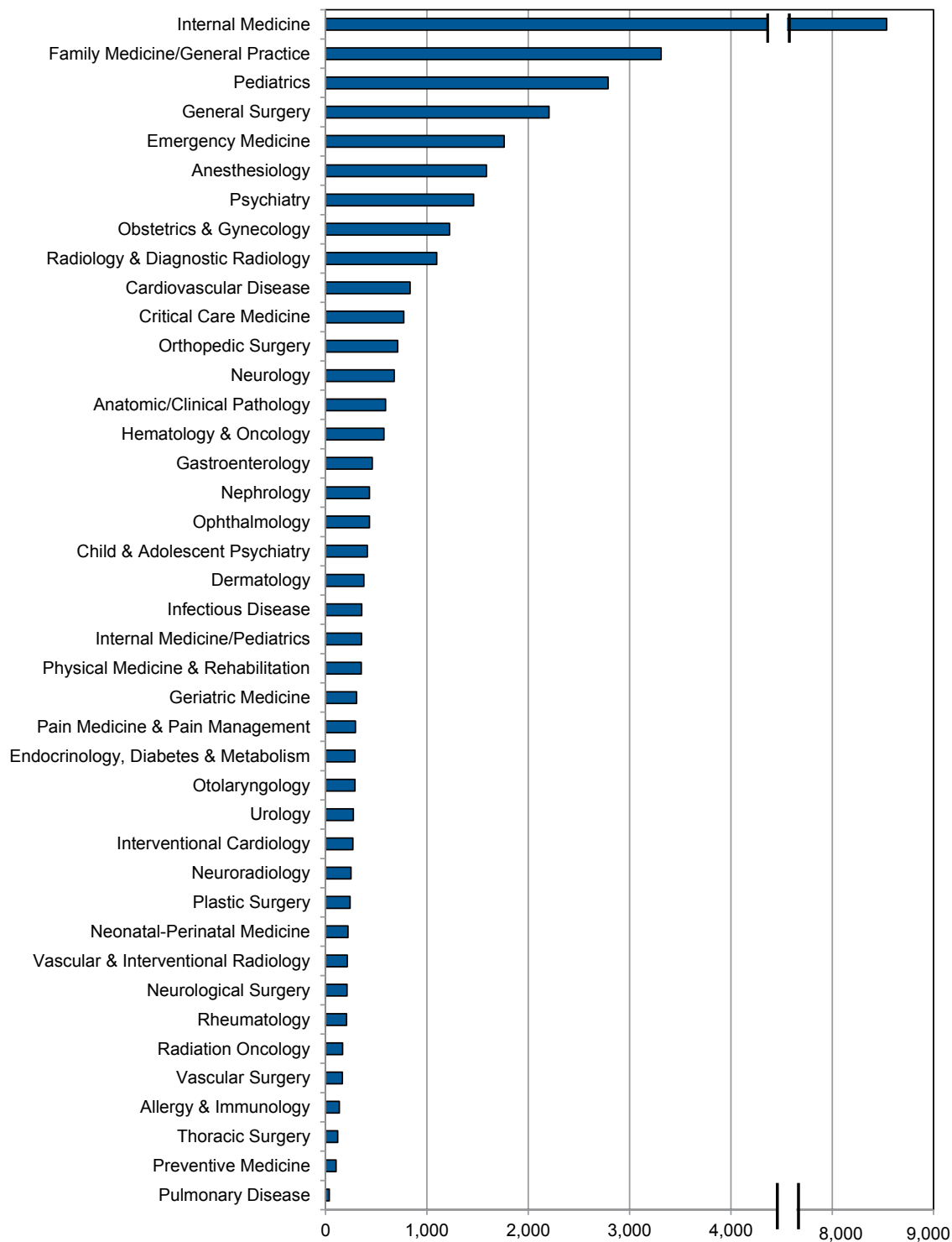
Source: AMA Physician Masterfile (December 2008 and December 2013)

Table 1.9 Percent Change in the Number of Active Physicians by Specialty, 2008-2013

Specialty	Total Active Physicians		Percent Change
	2008	2013	
All Specialties	773,804	829,961	7.3
Allergy & Immunology	4,247	4,504	6.1
Anatomic/Clinical Pathology	15,303	13,710	-10.4
Anesthesiology	39,206	40,758	4.0
Cardiovascular Disease	21,563	22,020	2.1
Child & Adolescent Psychiatry	7,425	8,237	10.9
Critical Care Medicine	6,149	8,832	43.6
Dermatology	10,504	11,363	8.2
Emergency Medicine	31,752	37,241	17.3
Endocrinology, Diabetes & Metabolism	5,612	6,519	16.2
Family Medicine/General Practice	104,046	108,917	4.7
Gastroenterology	12,333	13,626	10.5
General Surgery	26,055	25,187	-3.3
Geriatric Medicine	3,939	4,833	22.7
Hematology & Oncology	12,088	13,774	13.9
Infectious Disease	6,674	7,952	19.1
Internal Medicine	106,234	111,047	4.5
Internal Medicine/Pediatrics	3,408	4,396	29.0
Interventional Cardiology	1,468	2,711	84.7
Neonatal-Perinatal Medicine	4,178	4,886	16.9
Nephrology	7,840	9,394	19.8
Neurological Surgery	4,927	5,171	5.0
Neurology	12,739	13,156	3.3
Neuroradiology	2,020	2,917	44.4
Obstetrics & Gynecology	39,711	40,826	2.8
Ophthalmology	17,858	18,317	2.6
Orthopedic Surgery	19,844	19,374	-2.4
Otolaryngology	9,212	9,320	1.2
Pain Medicine & Pain Management	2,731	4,014	47.0
Pediatrics	54,308	56,262	3.6
Physical Medicine & Rehabilitation	8,229	8,906	8.2
Plastic Surgery	6,721	6,942	3.3
Preventive Medicine	6,986	6,606	-5.4
Psychiatry	38,857	37,296	-4.0
Pulmonary Disease	6,280	5,726	-8.8
Radiation Oncology	4,291	4,682	9.1
Radiology & Diagnostic Radiology	27,600	27,570	-0.1
Rheumatology	4,675	5,357	14.6
Thoracic Surgery	4,758	4,521	-5.0
Urology	9,836	9,771	-0.7
Vascular & Interventional Radiology	1,750	2,581	47.5
Vascular Surgery	2,672	3,130	17.1

Source: AMA Physician Masterfile (December 2008 and December 2013)

Figure 2.1 Number of First-Year ACGME Residents/Fellows by Specialty, 2013



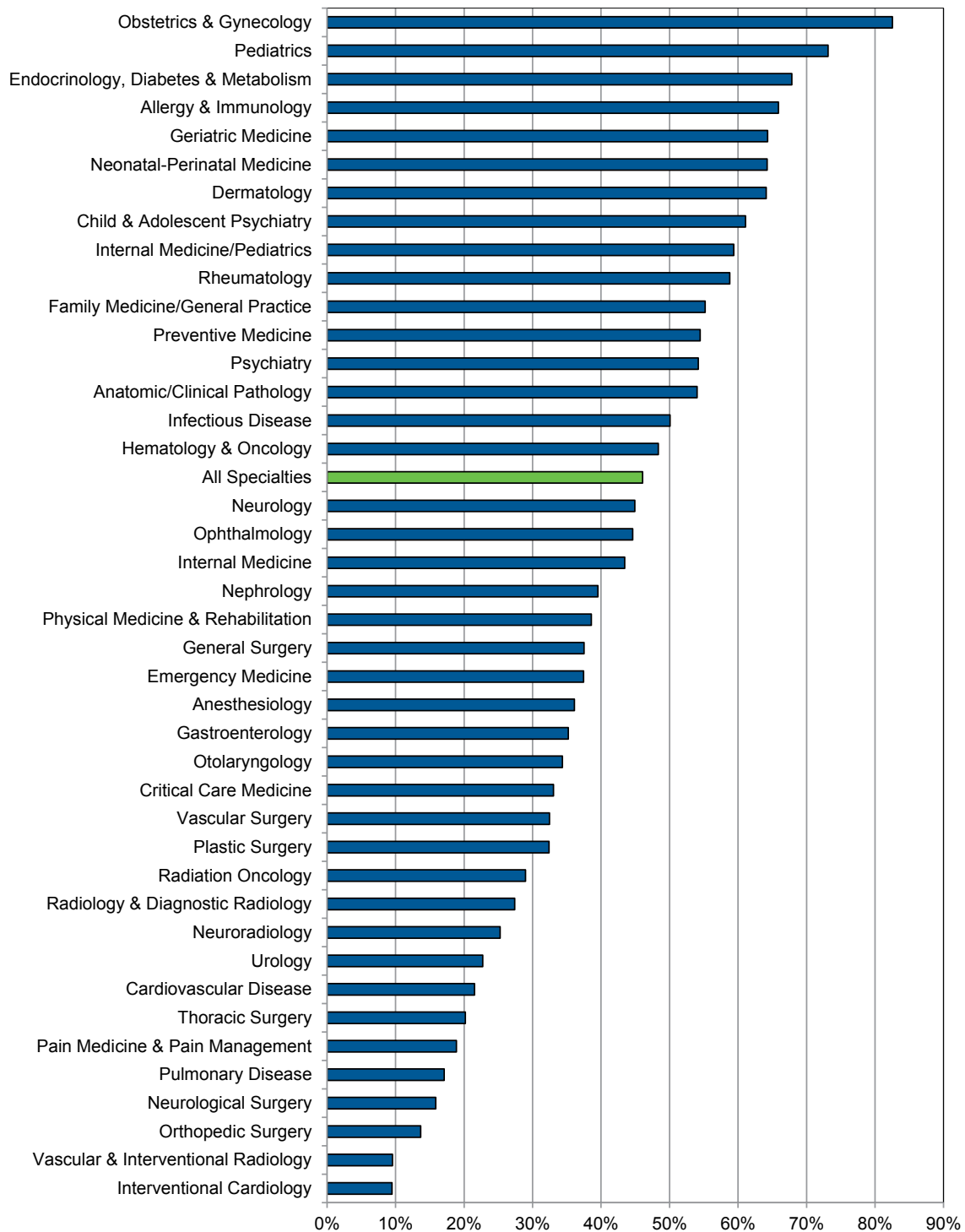
Source: 2013 AAMC/AMA National GME Census

Table 2.1 Number of First-Year ACGME Residents/Fellows by Specialty, 2013

Specialty	PY1 Residents and Fellows
All Specialties	41,098
Allergy & Immunology	137
Anatomic/Clinical Pathology	592
Anesthesiology	1,589
Cardiovascular Disease	834
Child & Adolescent Psychiatry	413
Critical Care Medicine	772
Dermatology	378
Emergency Medicine	1,763
Endocrinology, Diabetes & Metabolism	291
Family Medicine/General Practice	3,312
Gastroenterology	462
General Surgery	2,205
Geriatric Medicine	308
Hematology & Oncology	576
Infectious Disease	358
Internal Medicine	8,539
Internal Medicine/Pediatrics	355
Interventional Cardiology	271
Neonatal-Perinatal Medicine	221
Nephrology	434
Neurological Surgery	212
Neurology	678
Neuroradiology	251
Obstetrics & Gynecology	1,224
Ophthalmology	434
Orthopedic Surgery	713
Otolaryngology	291
Pain Medicine & Pain Management	296
Pediatrics	2,789
Physical Medicine & Rehabilitation	354
Plastic Surgery	243
Preventive Medicine	105
Psychiatry	1,461
Pulmonary Disease	37
Radiation Oncology	169
Radiology & Diagnostic Radiology	1,097
Rheumatology	207
Thoracic Surgery	121
Urology	274
Vascular & Interventional Radiology	215
Vascular Surgery	166

Source: 2013 AAMC/AMA National GME Census

Figure 2.2 Percentage of ACGME Residents/Fellows Who Are Female by Specialty, 2013



Source: 2013 AAMC/AMA National GME Census
Note: Excludes 86 residents/fellows whose sex is unknown.

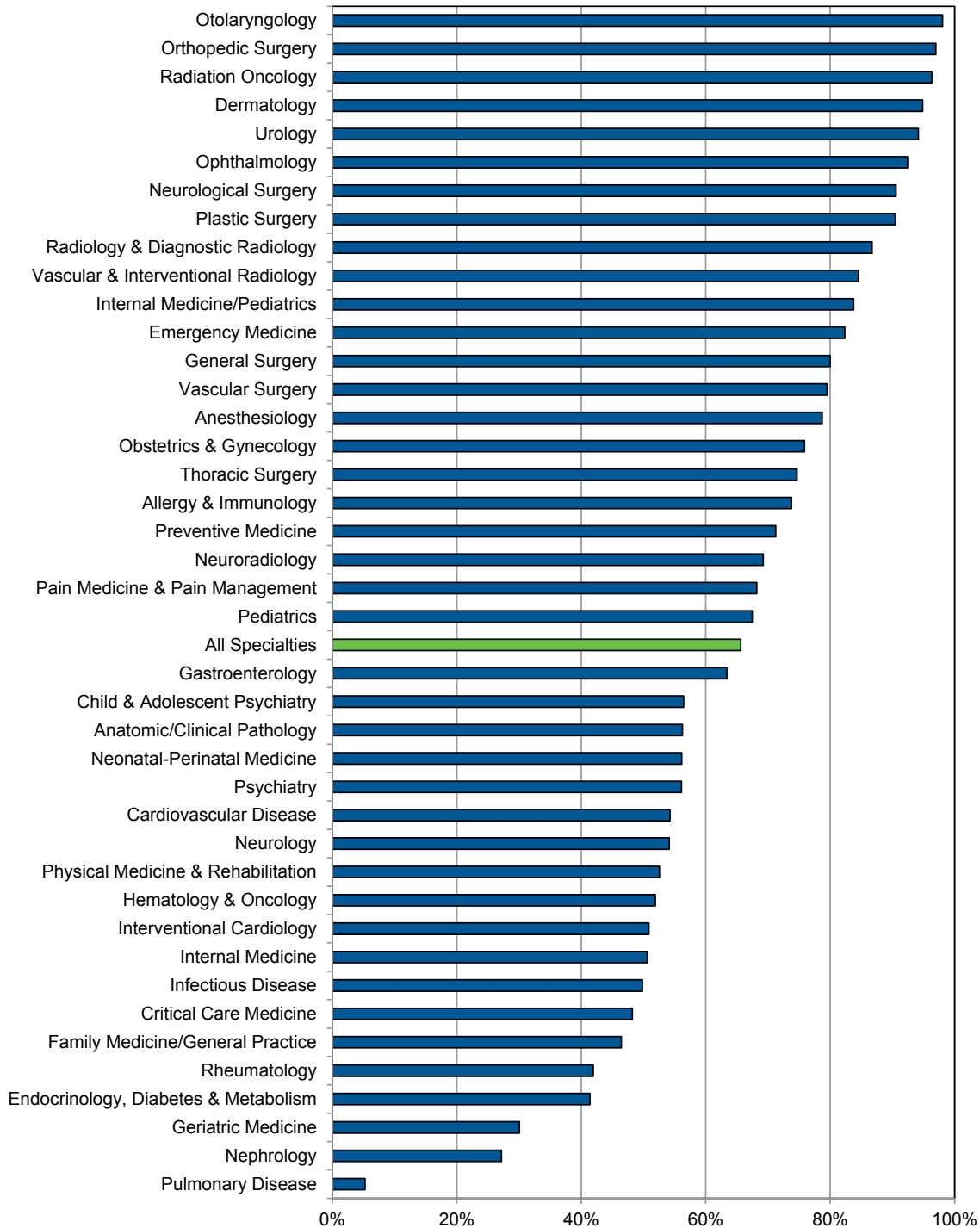
Table 2.2 Number and Percentage of ACGME Residents/Fellows by Sex and Specialty, 2013

Specialty	Total Residents and Fellows	Male		Female	
		Number	Percent	Number	Percent
All Specialties	116,675	62,925	53.9	53,750	46.1
Allergy & Immunology	305	104	34.1	201	65.9
Anatomic/Clinical Pathology	2,289	1,052	46.0	1,237	54.0
Anesthesiology	5,639	3,603	63.9	2,036	36.1
Cardiovascular Disease	2,596	2,037	78.5	559	21.5
Child & Adolescent Psychiatry	907	353	38.9	554	61.1
Critical Care Medicine	1,848	1,237	66.9	611	33.1
Dermatology	1,190	427	35.9	763	64.1
Emergency Medicine	5,599	3,502	62.5	2,097	37.5
Endocrinology, Diabetes & Metabolism	638	205	32.1	433	67.9
Family Medicine/General Practice	10,011	4,485	44.8	5,526	55.2
Gastroenterology	1,423	922	64.8	501	35.2
General Surgery	7,801	4,873	62.5	2,928	37.5
Geriatric Medicine	325	116	35.7	209	64.3
Hematology & Oncology	1,693	874	51.6	819	48.4
Infectious Disease	797	398	49.9	399	50.1
Internal Medicine	22,517	12,734	56.6	9,783	43.4
Internal Medicine/Pediatrics	1,442	586	40.6	856	59.4
Interventional Cardiology	285	258	90.5	27	9.5
Neonatal-Perinatal Medicine	666	238	35.7	428	64.3
Nephrology	931	563	60.5	368	39.5
Neurological Surgery	1,273	1,071	84.1	202	15.9
Neurology	2,167	1,193	55.1	974	44.9
Neuroradiology	273	204	74.7	69	25.3
Obstetrics & Gynecology	4,895	854	17.4	4,041	82.6
Ophthalmology	1,318	730	55.4	588	44.6
Orthopedic Surgery	3,500	3,022	86.3	478	13.7
Otolaryngology	1,450	952	65.7	498	34.3
Pain Medicine & Pain Management	302	245	81.1	57	18.9
Pediatrics	8,484	2,278	26.9	6,206	73.1
Physical Medicine & Rehabilitation	1,166	716	61.4	450	38.6
Plastic Surgery	892	603	67.6	289	32.4
Preventive Medicine	246	112	45.5	134	54.5
Psychiatry	5,015	2,297	45.8	2,718	54.2
Pulmonary Disease	76	63	82.9	13	17.1
Radiation Oncology	683	485	71.0	198	29.0
Radiology & Diagnostic Radiology	4,449	3,231	72.6	1,218	27.4
Rheumatology	427	176	41.2	251	58.8
Thoracic Surgery	312	249	79.8	63	20.2
Urology	1,196	924	77.3	272	22.7
Vascular & Interventional Radiology	220	199	90.5	21	9.5
Vascular Surgery	419	283	67.5	136	32.5

Source: 2013 AAMC/AMA National GME Census

Note: Excludes 86 residents/fellows whose sex is unknown.

Figure 2.3 Percentage of ACGME Residents/Fellows with a U.S. Doctor of Medicine (U.S. M.D.) Degree by Specialty, 2013



Source: 2013 AAMC/AMA National GME Census

Note: Excludes 52 residents whose degree type is unknown.

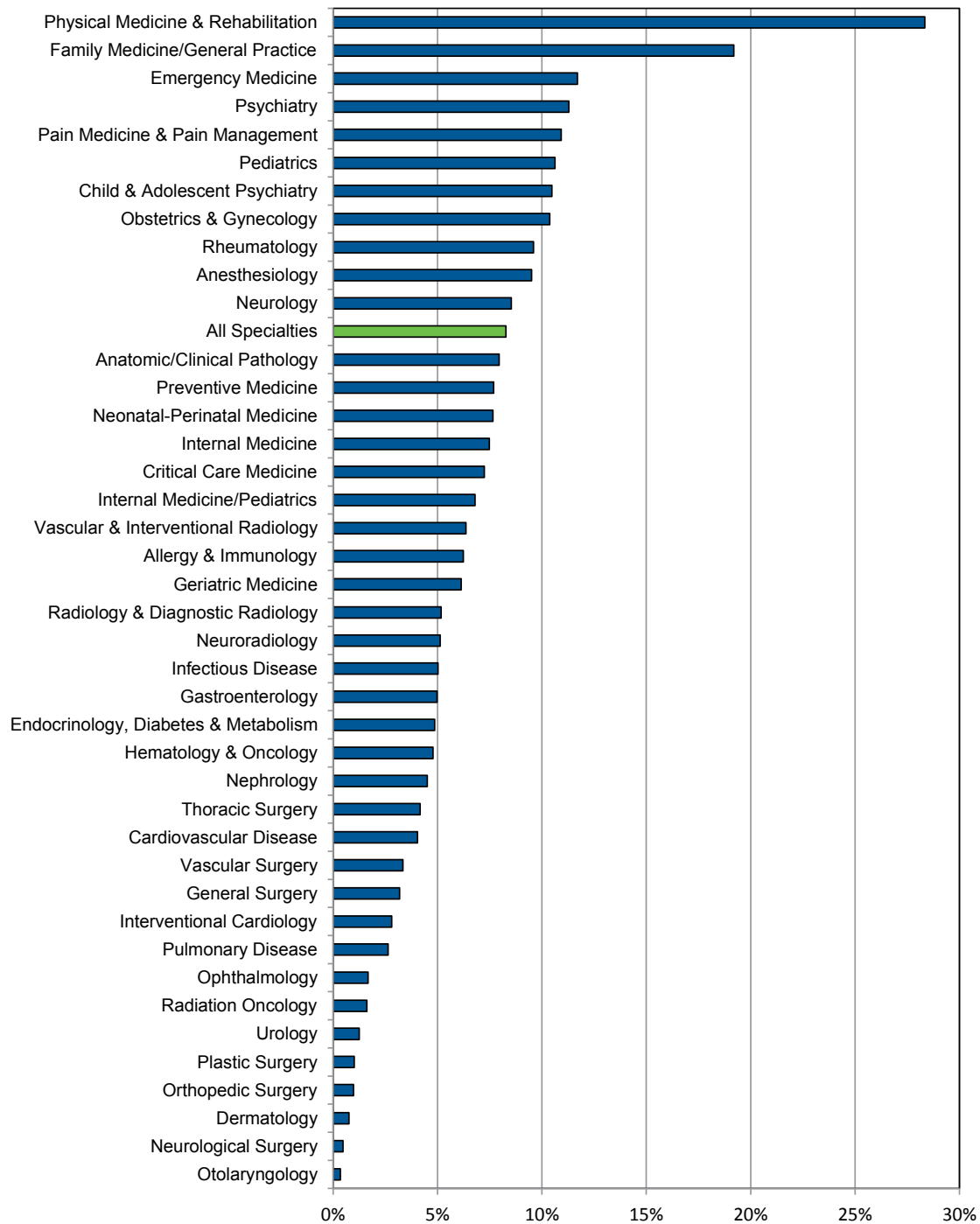
Table 2.3 Number and Percentage of ACGME Residents/Fellows with a U.S. Doctor of Medicine (U.S. M.D.) Degree by Specialty, 2013

Specialty	Total Residents and Fellows	U.S. M.D. Residents and Fellows	Percent
All Specialties	116,709	76,594	65.6
Allergy & Immunology	305	225	73.8
Anatomic/Clinical Pathology	2,288	1,287	56.3
Anesthesiology	5,638	4,438	78.7
Cardiovascular Disease	2,596	1,408	54.2
Child & Adolescent Psychiatry	907	512	56.4
Critical Care Medicine	1,849	891	48.2
Dermatology	1,190	1,129	94.9
Emergency Medicine	5,595	4,607	82.3
Endocrinology, Diabetes & Metabolism	638	264	41.4
Family Medicine/General Practice	10,008	4,648	46.4
Gastroenterology	1,425	903	63.4
General Surgery	7,792	6,234	80.0
Geriatric Medicine	326	98	30.1
Hematology & Oncology	1,693	879	51.9
Infectious Disease	797	397	49.8
Internal Medicine	22,552	11,409	50.6
Internal Medicine/Pediatrics	1,442	1,208	83.8
Interventional Cardiology	285	145	50.9
Neonatal-Perinatal Medicine	666	374	56.2
Nephrology	931	253	27.2
Neurological Surgery	1,273	1,153	90.6
Neurology	2,169	1,174	54.1
Neuroradiology	273	189	69.2
Obstetrics & Gynecology	4,888	3,708	75.9
Ophthalmology	1,319	1,219	92.4
Orthopedic Surgery	3,503	3,397	97.0
Otolaryngology	1,449	1,421	98.1
Pain Medicine & Pain Management	302	206	68.2
Pediatrics	8,480	5,720	67.5
Physical Medicine & Rehabilitation	1,168	614	52.6
Plastic Surgery	892	807	90.5
Preventive Medicine	247	176	71.3
Psychiatry	5,012	2,811	56.1
Pulmonary Disease	76	4	5.3
Radiation Oncology	683	658	96.3
Radiology & Diagnostic Radiology	4,465	3,873	86.7
Rheumatology	427	179	41.9
Thoracic Surgery	312	233	74.7
Urology	1,196	1,126	94.1
Vascular & Interventional Radiology	220	186	84.5
Vascular Surgery	419	333	79.5

Source: 2013 AAMC/AMA National GME Census

Note: Excludes 52 residents whose degree type is unknown.

Figure 2.4 Percentage of ACGME Residents/Fellows with a Doctor of Osteopathic Medicine (D.O.) Degree by Specialty, 2013



Source: 2013 AAMC/AMA National GME Census
Note: Excludes 52 residents whose degree type is unknown.

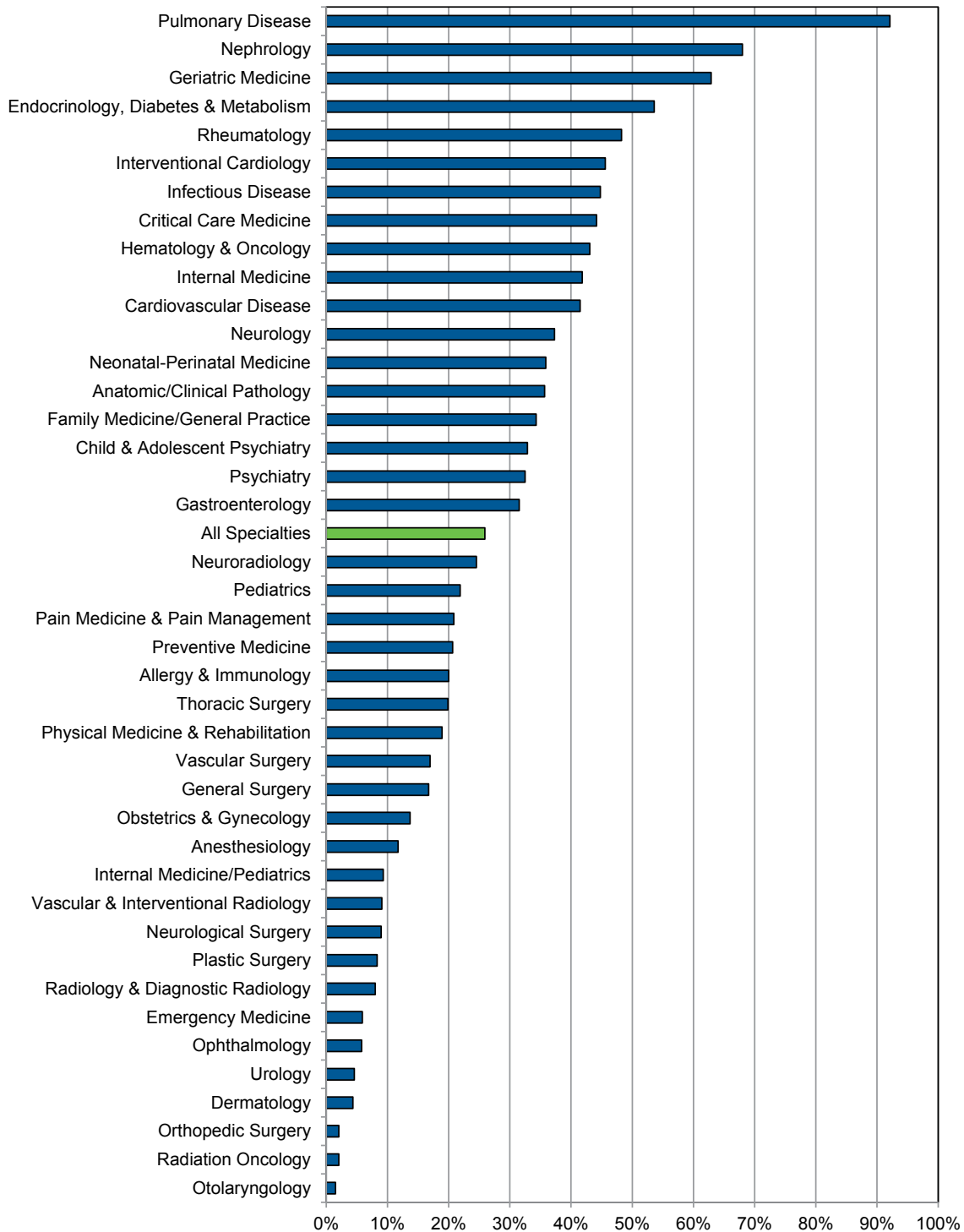
Table 2.4 Number and Percentage of ACGME Residents/Fellows with a Doctor of Osteopathic Medicine (D.O.) Degree by Specialty, 2013

Specialty	Total Residents and Fellows	D.O. Residents and Fellows	Percent
All Specialties	116,709	9,659	8.3
Allergy & Immunology	305	19	6.2
Anatomic/Clinical Pathology	2,288	182	8.0
Anesthesiology	5,638	536	9.5
Cardiovascular Disease	2,596	105	4.0
Child & Adolescent Psychiatry	907	95	10.5
Critical Care Medicine	1,849	134	7.2
Dermatology	1,190	9	0.8
Emergency Medicine	5,595	655	11.7
Endocrinology, Diabetes & Metabolism	638	31	4.9
Family Medicine/General Practice	10,008	1,921	19.2
Gastroenterology	1,425	71	5.0
General Surgery	7,792	248	3.2
Geriatric Medicine	326	20	6.1
Hematology & Oncology	1,693	81	4.8
Infectious Disease	797	40	5.0
Internal Medicine	22,552	1,688	7.5
Internal Medicine/Pediatrics	1,442	98	6.8
Interventional Cardiology	285	8	2.8
Neonatal-Perinatal Medicine	666	51	7.7
Nephrology	931	42	4.5
Neurological Surgery	1,273	6	0.5
Neurology	2,169	185	8.5
Neuroradiology	273	14	5.1
Obstetrics & Gynecology	4,888	507	10.4
Ophthalmology	1,319	22	1.7
Orthopedic Surgery	3,503	34	1.0
Otolaryngology	1,449	5	0.3
Pain Medicine & Pain Management	302	33	10.9
Pediatrics	8,480	901	10.6
Physical Medicine & Rehabilitation	1,168	331	28.3
Plastic Surgery	892	9	1.0
Preventive Medicine	247	19	7.7
Psychiatry	5,012	566	11.3
Pulmonary Disease	76	2	2.6
Radiation Oncology	683	11	1.6
Radiology & Diagnostic Radiology	4,465	231	5.2
Rheumatology	427	41	9.6
Thoracic Surgery	312	13	4.2
Urology	1,196	15	1.3
Vascular & Interventional Radiology	220	14	6.4
Vascular Surgery	419	14	3.3

Source: 2013 AAMC/AMA National GME Census

Note: Excludes 52 residents whose degree type is unknown.

Figure 2.5 Percentage of ACGME Residents/Fellows Who Are International Medical Graduates (IMGs) by Specialty, 2013



Source: 2013 AAMC/AMA National GME Census
Note: Excludes 52 residents whose degree type is unknown.

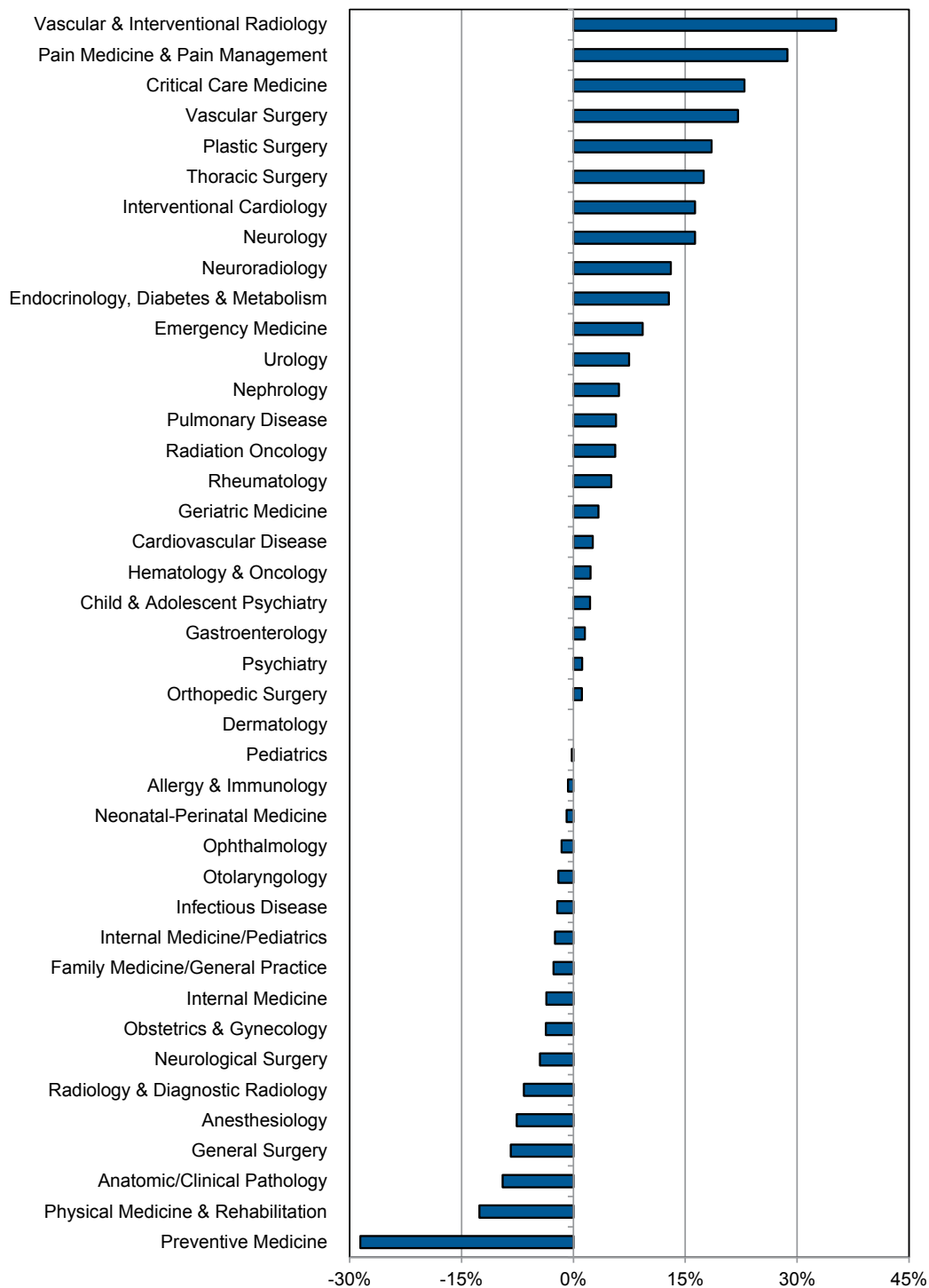
Table 2.5 Number and Percentage of ACGME Residents/Fellows Who Are International Medical Graduates (IMGs) by Specialty, 2013

Specialty	Total Residents and Fellows	IMG Residents and Fellows	Percent
All Specialties	116,709	30,246	25.9
Allergy & Immunology	305	61	20.0
Anatomic/Clinical Pathology	2,288	816	35.7
Anesthesiology	5,638	661	11.7
Cardiovascular Disease	2,596	1,077	41.5
Child & Adolescent Psychiatry	907	298	32.9
Critical Care Medicine	1,849	817	44.2
Dermatology	1,190	52	4.4
Emergency Medicine	5,595	330	5.9
Endocrinology, Diabetes & Metabolism	638	342	53.6
Family Medicine/General Practice	10,008	3,433	34.3
Gastroenterology	1,425	449	31.5
General Surgery	7,792	1,303	16.7
Geriatric Medicine	326	205	62.9
Hematology & Oncology	1,693	729	43.1
Infectious Disease	797	357	44.8
Internal Medicine	22,552	9,433	41.8
Internal Medicine/Pediatrics	1,442	134	9.3
Interventional Cardiology	285	130	45.6
Neonatal-Perinatal Medicine	666	239	35.9
Nephrology	931	633	68.0
Neurological Surgery	1,273	114	9.0
Neurology	2,169	809	37.3
Neuroradiology	273	67	24.5
Obstetrics & Gynecology	4,888	669	13.7
Ophthalmology	1,319	76	5.8
Orthopedic Surgery	3,503	72	2.1
Otolaryngology	1,449	22	1.5
Pain Medicine & Pain Management	302	63	20.9
Pediatrics	8,480	1,854	21.9
Physical Medicine & Rehabilitation	1,168	221	18.9
Plastic Surgery	892	74	8.3
Preventive Medicine	247	51	20.6
Psychiatry	5,012	1,628	32.5
Pulmonary Disease	76	70	92.1
Radiation Oncology	683	14	2.0
Radiology & Diagnostic Radiology	4,465	357	8.0
Rheumatology	427	206	48.2
Thoracic Surgery	312	62	19.9
Urology	1,196	55	4.6
Vascular & Interventional Radiology	220	20	9.1
Vascular Surgery	419	71	16.9

Source: 2013 AAMC/AMA National GME Census

Note: Excludes 52 residents whose degree type is unknown.

Figure 2.6 Percent Change in Number of First-Year ACGME Residents/Fellows by Specialty, 2008-2013



Source: 2008 and 2013 AAMC/AMA National GME Censuses

Table 2.6 Percent Change in Number of First-Year ACGME Residents/Fellows by Specialty, 2008-2013

Specialty	Total Residents and Fellows		Percent Change
	2008	2013	
All Specialties	40,045	41,098	2.6
Allergy & Immunology	138	137	-0.7
Anatomic/Clinical Pathology	654	592	-9.5
Anesthesiology	1,720	1,589	-7.6
Cardiovascular Disease	813	834	2.6
Child & Adolescent Psychiatry	404	413	2.2
Critical Care Medicine	628	772	22.9
Dermatology	378	378	0.0
Emergency Medicine	1,613	1,763	9.3
Endocrinology, Diabetes & Metabolism	258	291	12.8
Family Medicine/General Practice	3,403	3,312	-2.7
Gastroenterology	455	462	1.5
General Surgery	2,407	2,205	-8.4
Geriatric Medicine	298	308	3.4
Hematology & Oncology	563	576	2.3
Infectious Disease	366	358	-2.2
Internal Medicine	8,862	8,539	-3.6
Internal Medicine/Pediatrics	364	355	-2.5
Interventional Cardiology	233	271	16.3
Neonatal-Perinatal Medicine	223	221	-0.9
Nephrology	409	434	6.1
Neurological Surgery	222	212	-4.5
Neurology	583	678	16.3
Neuroradiology	222	251	13.1
Obstetrics & Gynecology	1,271	1,224	-3.7
Ophthalmology	441	434	-1.6
Orthopedic Surgery	705	713	1.1
Otolaryngology	297	291	-2.0
Pain Medicine & Pain Management	230	296	28.7
Pediatrics	2,795	2,789	-0.2
Physical Medicine & Rehabilitation	405	354	-12.6
Plastic Surgery	205	243	18.5
Preventive Medicine	147	105	-28.6
Psychiatry	1,444	1,461	1.2
Pulmonary Disease	35	37	5.7
Radiation Oncology	160	169	5.6
Radiology & Diagnostic Radiology	1,175	1,097	-6.6
Rheumatology	197	207	5.1
Thoracic Surgery	103	121	17.5
Urology	255	274	7.5
Vascular & Interventional Radiology	159	215	35.2
Vascular Surgery	136	166	22.1

Source: 2008 and 2013 AAMC/AMA National GME Censuses



**Association of
American Medical Colleges**

655 K Street, N.W., Suite 100, Washington, D.C. 20001-2399

T 202 828 0400 F 202 828 1125

www.aamc.org